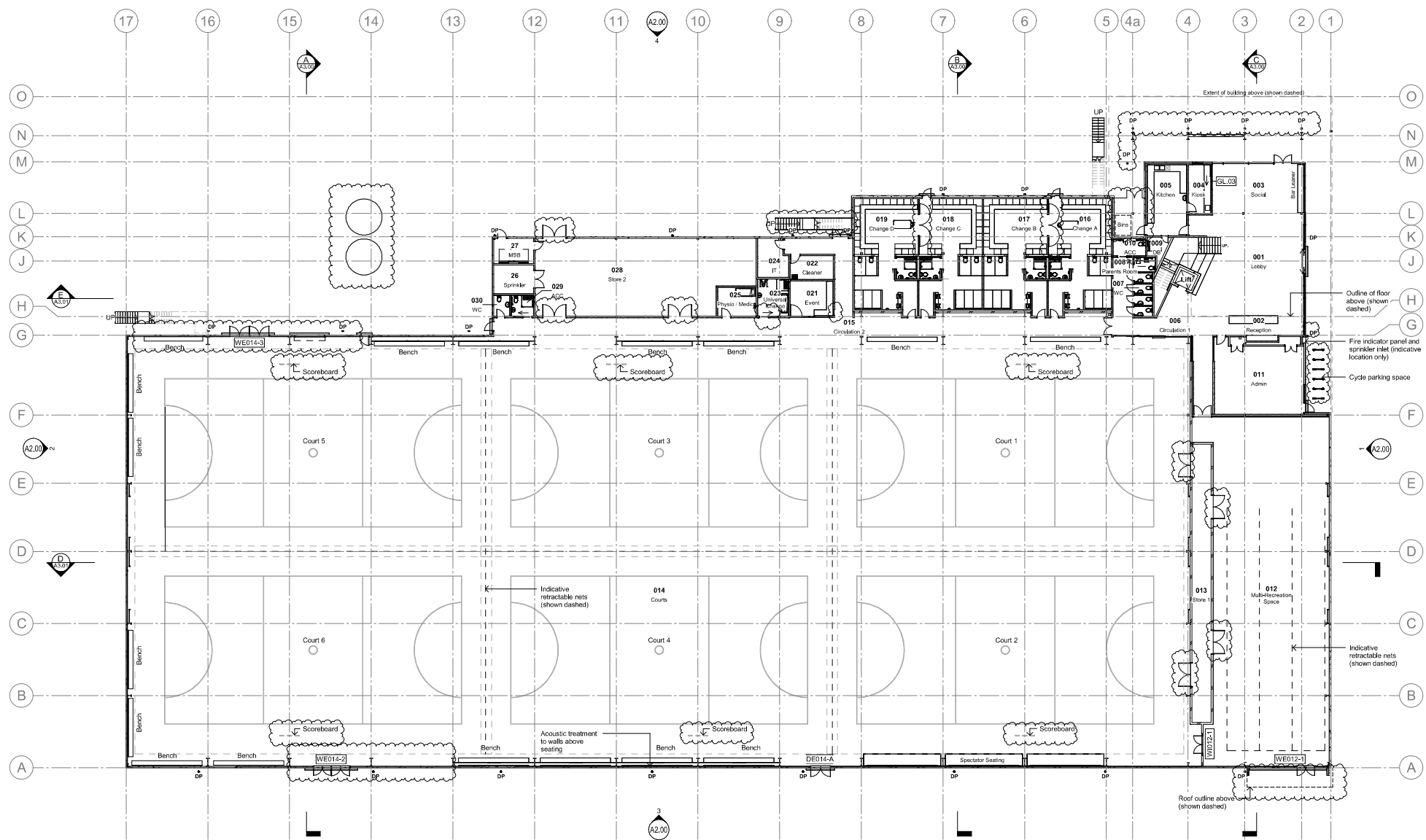


NOTES:

1. Do not scale of this drawing. Use figured dimensions only. Drawings printed from pdf this will **NOT** be to scale.
2. Contractor to verify all details and dimensions on site before commencing work.
3. Contractor to report any apparent discrepancy to the Architect for interpretation prior to affected work proceeding.



REVISIONS:

REV	DATE	DESCRIPTION
P0	14.11.23	Preliminary Issue
P1	11.12.23	Preliminary Issue
P2	11.12.23	Preliminary Issue
P3	13.12.23	Preliminary Issue
P4	15.01.24	Preliminary Issue
P5	02.02.24	Preliminary Issue
P6	01.03.24	Preliminary Issue
P7	01.03.24	Preliminary Issue
P8	07.03.24	Preliminary Issue
P9	04.04.24	Amendments

Room Schedule - Level G - Stage One

Number	Name	Area
001	Lobby	139 m <sup>2</sup>
002	Reception	23 m <sup>2</sup>
003	Social	49 m <sup>2</sup>
004	Kiosk	12 m <sup>2</sup>
005	Kitchen	31 m <sup>2</sup>
006	Circulation 1	50 m <sup>2</sup>
007	WC	9 m <sup>2</sup>
008	Parents Room	3 m <sup>2</sup>
009	DB	4 m <sup>2</sup>
010	ACC	5 m <sup>2</sup>
011	Admin	71 m <sup>2</sup>
012	Multi-Recreation Space	438 m <sup>2</sup>
013	Store 1	57 m <sup>2</sup>
014	Courts	4808 m <sup>2</sup>
015	Circulation 2	158 m <sup>2</sup>

Room Schedule - Level G - Stage One

Number	Name	Area
016	Change A	71 m <sup>2</sup>
017	Change B	72 m <sup>2</sup>
018	Change C	71 m <sup>2</sup>
019	Change D	72 m <sup>2</sup>
021	Event	16 m <sup>2</sup>
022	Cleaner	11 m <sup>2</sup>
023	Universal Change	12 m <sup>2</sup>
024	IT	12 m <sup>2</sup>
025	Physio / Medic	12 m <sup>2</sup>
026	Store 2	168 m <sup>2</sup>
029	ACC	5 m <sup>2</sup>
030	WC	3 m <sup>2</sup>

PRELIMINARY



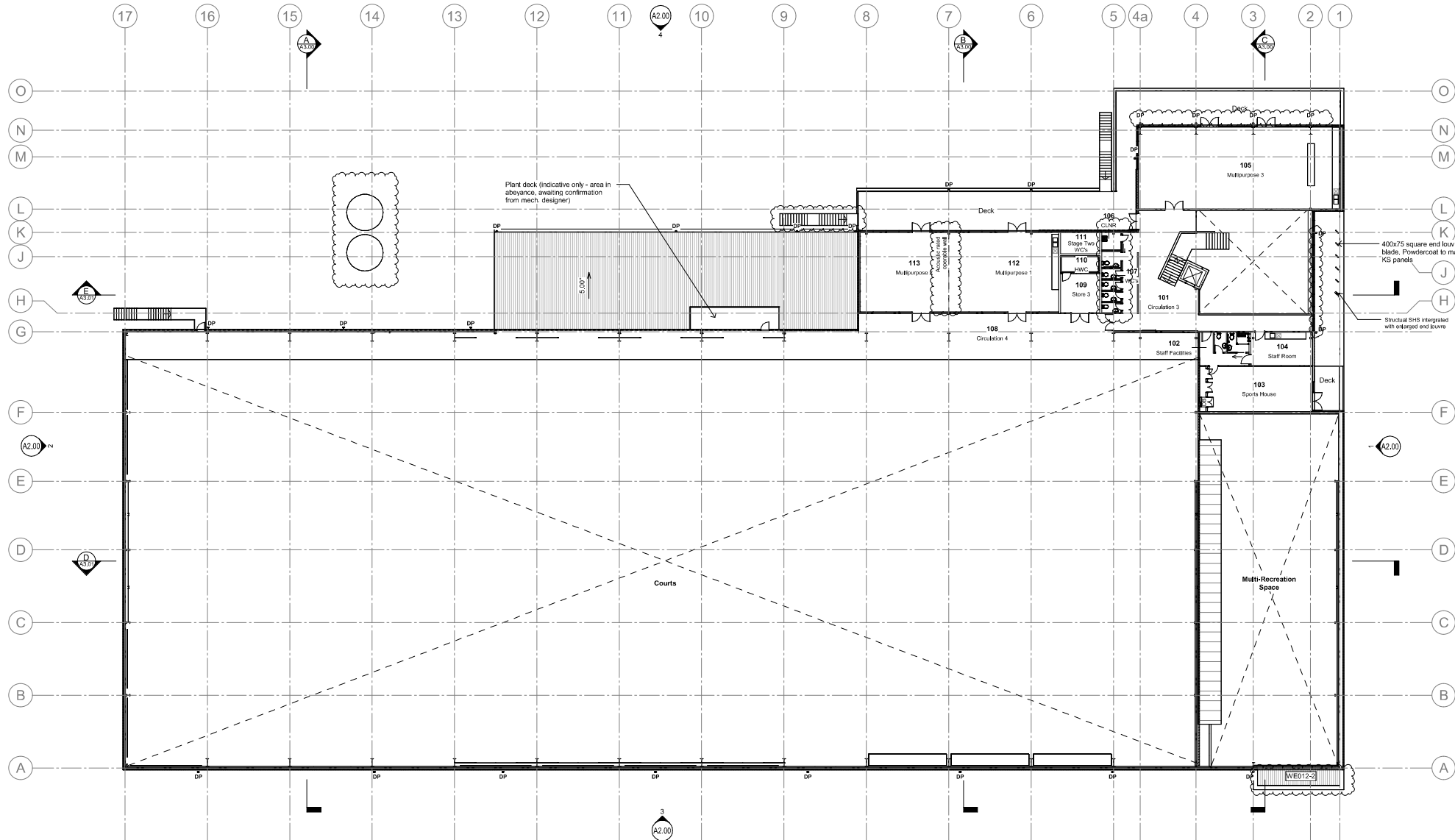
NETWORK WAITAKI  
EVENTS CENTRE

Centennial Park, Oamaru  
for Waitaki District Council

PROPOSED FLOOR  
PLAN - LEVEL G -  
STAGE ONE

Drawing No.	Rev.	Rev. No.
A1.10	200	2234
A1.10		P9

Architecture HDT Ltd



Number	Name	Area
101	Circulation 3	95 m²
102	Staff Facilities	17 m²
103	Sports House	53 m²
104	Staff Room	21 m²
105	Multipurpose 3	173 m²
106	CLNR	3 m²
107	WC's	12 m²
108	Circulation 4	363 m²
109	Store 3	16 m²
110	HWC	6 m²
111	Stage Two WC's	9 m²
112	Multipurpose 1	64 m²
113	Multipurpose 2	101 m²

- NOTES:**
- Do not scale off this drawing. Use figured dimensions only. Drawings printed from pdf files will **NOT** be to scale.
  - Contractor to verify all details and dimensions on site before commencing work.
  - Contractor to report any apparent discrepancy to the Architect for interpretation prior to affected work proceeding.



**REVISIONS:**

REV	DATE	DESCRIPTION
P0	14.11.23	Preliminary Issue
P1	11.12.23	Preliminary Issue
P2	11.12.23	Preliminary Issue
P3	13.12.23	Preliminary Issue
P4	15.01.24	Preliminary Issue
P5	02.02.24	Preliminary Issue
P6	01.03.24	Preliminary Issue
P7	01.03.24	Preliminary Issue
P8	07.03.24	Preliminary Issue
P9	04.04.24	Preliminary Issue - Amendments

**PRELIMINARY**



**NETWORK WAITAKI  
EVENTS CENTRE**

Centennial Park, Oamaru  
for Waitaki District Council

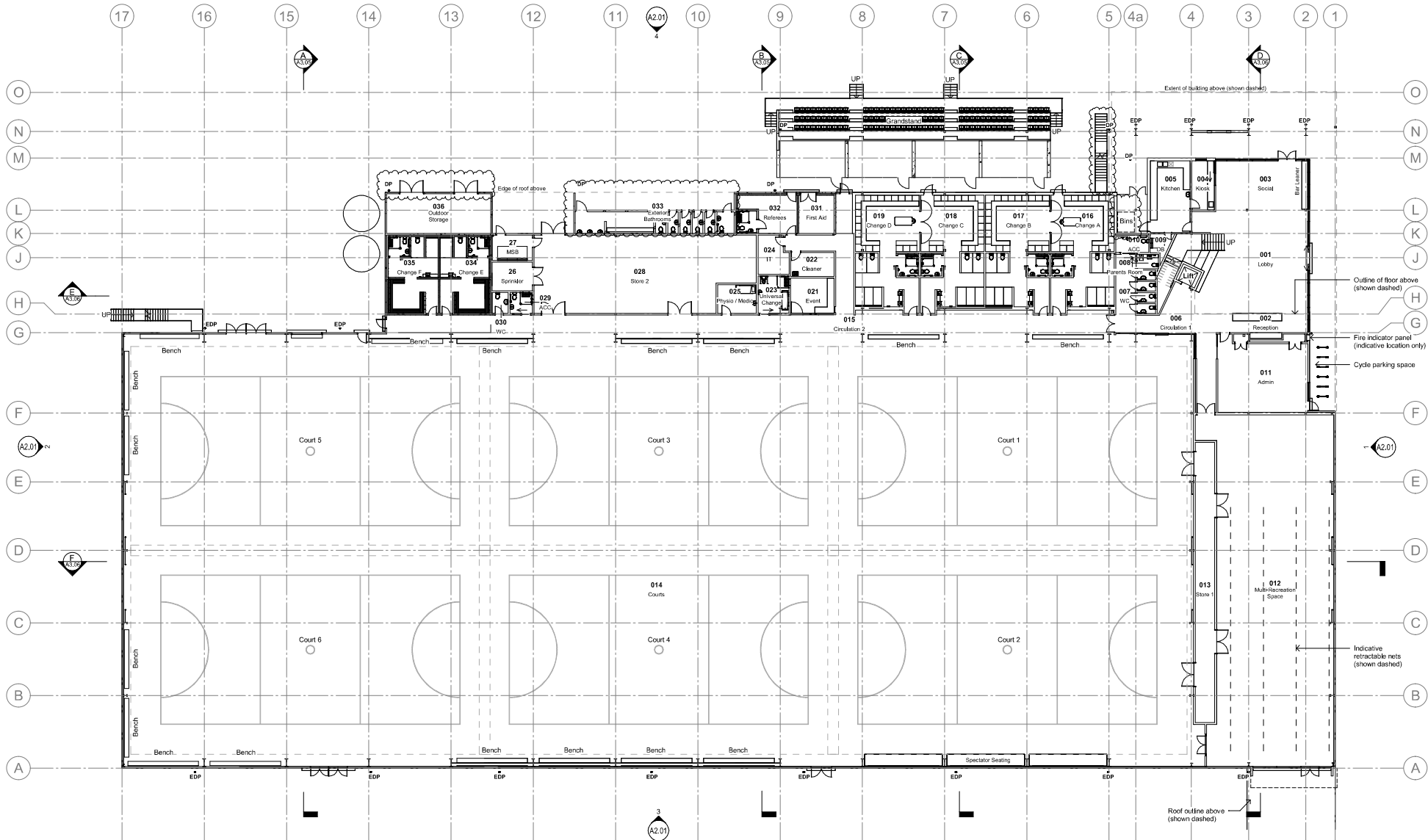
**PROPOSED FLOOR  
PLAN - MEZZANINE -  
STAGE ONE**

Drawing No.	Rev	Rev No.	Rev Date
A1.11	P9		

Architecture HDT Ltd

NOTES:

1. Do not scale off this drawing. Use figured dimensions only. Drawings printed from pdf files will NOT be to scale.
2. Contractor to verify all details and dimensions on site before commencing work.
3. Contractor to report any apparent discrepancy to the Architect for interpretation prior to affected work proceeding.



Room Schedule - Level G - Stage Two			
Number	Name	Area	
001	Lobby	139 m²	
002	Reception	23 m²	
003	Social	49 m²	
004	Kiosk	12 m²	
005	Kitchen	31 m²	
006	Circulation 1	50 m²	
007	W.C.	8 m²	
008	Parents Room	3 m²	
009	DB	4 m²	
010	ACC	5 m²	
011	Admin	71 m²	
012	Multi-Recreation Space	438 m²	
013	Store 1	57 m²	
014	Courts	4807 m²	
015	Circulation 2	185 m²	
016	Change A	71 m²	
017	Change B	72 m²	
018	Change C	71 m²	

Room Schedule - Level G - Stage Two			
Number	Name	Area	
019	Change D	72 m²	
021	Event	16 m²	
022	Cleaner	11 m²	
023	Universal Change	12 m²	
024	IT	12 m²	
025	Physio / Medic	12 m²	
028	Store 2	168 m²	
029	ACC	5 m²	
030	W.C.	3 m²	
031	First Aid	14 m²	
032	Referees	23 m²	
033	Exterior Bathrooms	36 m²	
034	Change E	37 m²	
035	Change F	38 m²	
036	Outdoor Storage	43 m²	

REVISIONS:			
REV	DATE	DESCRIPTION	BY
P0	14.11.23	Preliminary Issue	
P1	11.12.23	Preliminary Issue	
P2	11.12.23	Preliminary Issue	
P3	13.12.23	Preliminary Issue	
P4	15.01.24	Preliminary Issue	
P5	24.01.24	Preliminary Issue	
P6	28.01.24	Preliminary Issue	
P7	02.02.24	Preliminary Issue	
P8	14.02.24	Preliminary Issue	
P9	01.03.24	Preliminary Issue	
P10	01.03.24	Preliminary Issue	
P11	07.03.24	Preliminary Issue	
P12	04.04.24	Preliminary Issue - Amendments	

PRELIMINARY



NETWORK WAITAKI  
EVENTS CENTRE

Centennial Park, Oamaru  
for Waitaki District Council

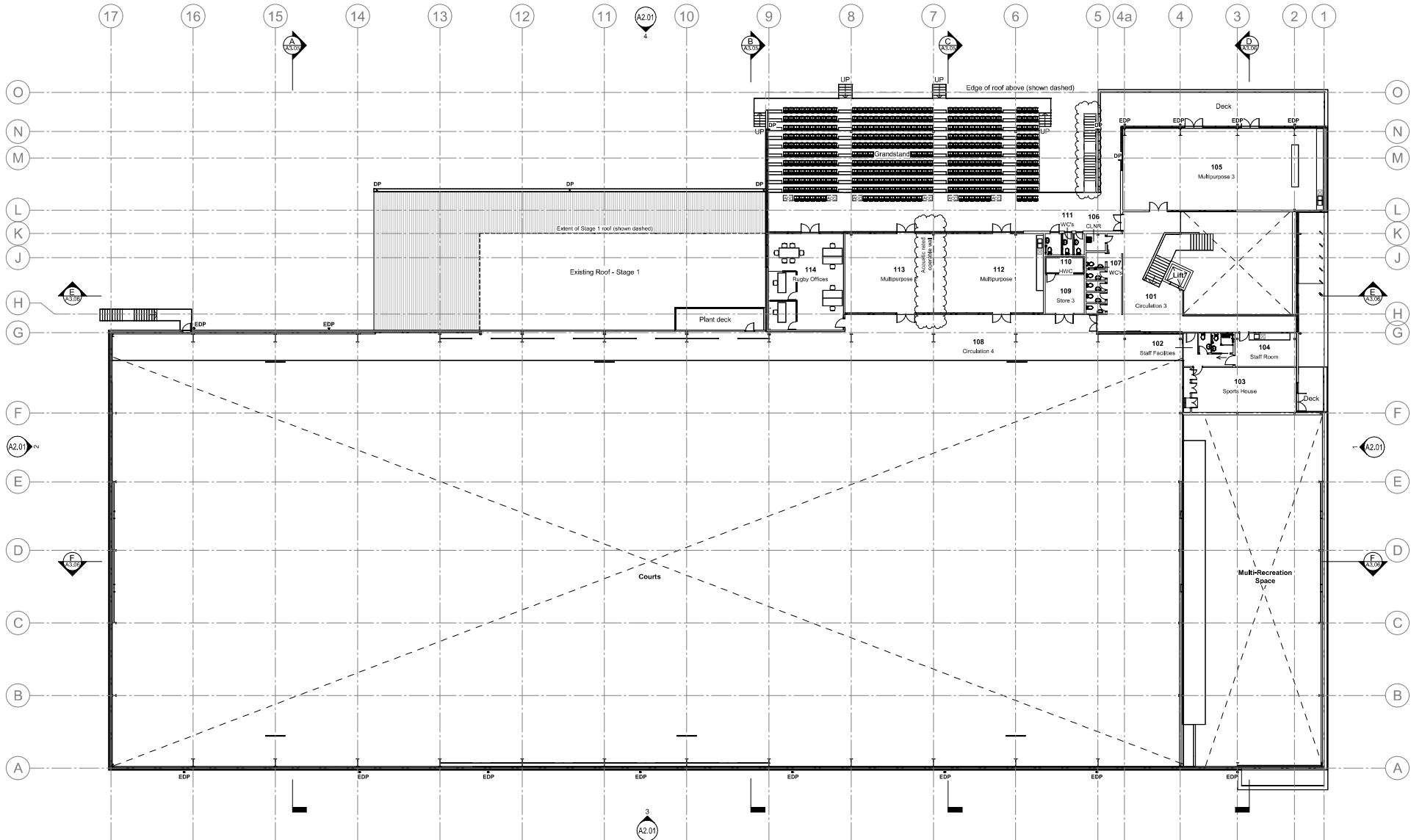
PROPOSED FLOOR  
PLAN - LEVEL G -  
STAGE TWO

Drawn By: A1.15	Rev: 2234
Checked By: A1.15	Rev: P12

Architecture HDT Ltd

NOTES:

1. Do not scale off this drawing. Use figured dimensions only. Drawings printed from pdf this will **NOT** be to scale.
2. Contractor to verify all details and dimensions on site before commencing work.
3. Contractor to report any apparent discrepancy to the Architect for interpretation prior to affected work proceeding.



Room Schedule - Mezzanine - Stage Two			
Number	Name	Area	
101	Circulation 3	96 m²	
102	Staff Facilities	17 m²	
103	Sports House	53 m²	
104	Staff Room	21 m²	
105	Multipurpose 3	173 m²	
106	CLNR	3 m²	
107	WC's	12 m²	
108	Circulation 4	363 m²	
109	Store 3	16 m²	
110	HWC	6 m²	
111	WC's	9 m²	
112	Multipurpose 1	64 m²	
113	Multipurpose 2	101 m²	
114	Rugby Offices	76 m²	

REVISIONS:			
REV	DATE	DESCRIPTION	
P0	14.11.23	Preliminary Issue	
P1	11.12.23	Preliminary Issue	
P2	11.12.23	Preliminary Issue	
P3	13.12.23	Preliminary Issue	
P4	15.01.24	Preliminary Issue	
P5	24.01.24	Preliminary Issue	
P6	28.01.24	Preliminary Issue	
P7	02.02.24	Preliminary Issue	
P8	14.02.24	Preliminary Issue	
P9	01.03.24	Preliminary Issue	
P10	01.03.24	Preliminary Issue	
P11	07.03.24	Preliminary Issue	
P12	04.04.24	Preliminary Issue - Amendments	

PRELIMINARY



NETWORK WAITAKI  
EVENTS CENTRE

Centennial Park, Oamaru  
for Waitaki District Council

PROPOSED FLOOR  
PLAN - MEZZANINE -  
STAGE TWO

Drawn By: A1.16	Rev No: 2234
Checked By: A1.16	Revision No: P12

Architecture HDT Ltd



**STAGE ONE**

**PRELIMINARY**



**NETWORK WAITAKI  
EVENTS CENTRE**

Centennial Park, Oamaru  
for Waitaki District Council

**EXTERIOR VISUALISATION  
- STAGE ONE**

Job No. 2234

Architecture HDT Ltd





## STAGE TWO

### PRELIMINARY



NETWORK WAITAKI  
EVENTS CENTRE

Centennial Park, Oamaru  
for Waitaki District Council

**EXTERIOR VISUALISATION  
- STAGE TWO**

JOB NO. 2234

Architecture HDT Ltd



**PRELIMINARY**



NETWORK WAITAKI  
EVENTS CENTRE

Centennial Park, Oamaru  
for Waitaki District Council

**EXTERIOR VISUALISATION  
- CARPARK & MULTI-REC**

JOB No. 2234

Architecture HDT Ltd





**PRELIMINARY**



NETWORK WAITAKI  
EVENTS CENTRE

Centennial Park, Oamaru  
for Waitaki District Council

**INTERIOR VISUALISATION -  
LOBBY**

JOB NO. 2234

Architecture HDT Ltd





PRELIMINARY



NETWORK WAITAKI  
EVENTS CENTRE

Centennial Park, Oamaru  
for Waitaki District Council

INTERIOR VISUALISATION -  
COURTS

Job No. 2234

Architecture HDT Ltd