

## **Appendix D: Alternative Route Maps**

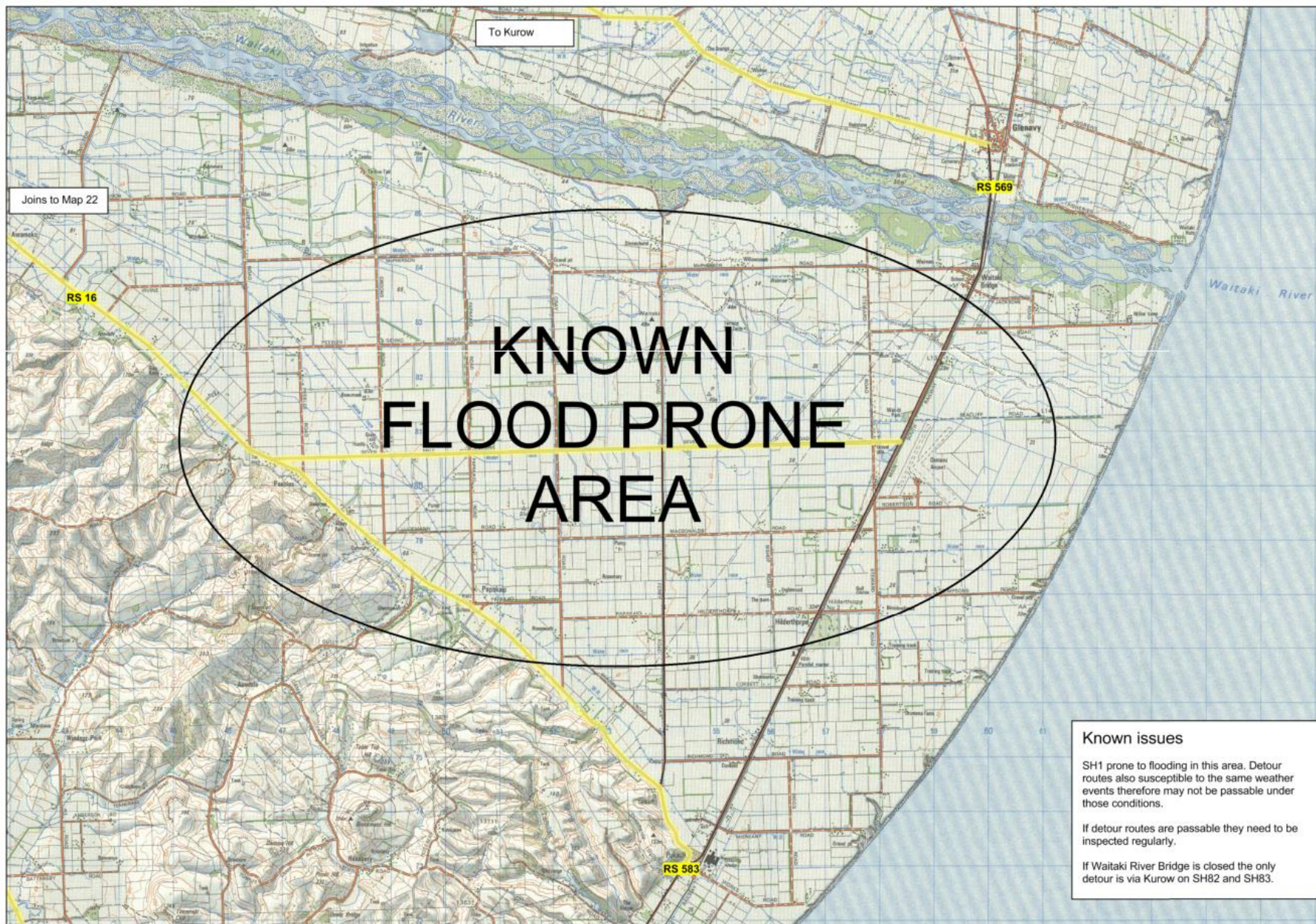
### **Summary of Alternative Route Maps in Waitaki District**

**SH1 – Page 2-5**

**SH83 – Page 6-11**

**SH87 – Page 13-14**

**SH8 – No Detours Available**



# KNOWN FLOOD PRONE AREA

**Known issues**

SH1 prone to flooding in this area. Detour routes also susceptible to the same weather events therefore may not be passable under those conditions.

If detour routes are passable they need to be inspected regularly.

If Waitaki River Bridge is closed the only detour is via Kurow on SH82 and SH83.

- Level 1 Detour Routes  
Available to all vehicles
- Level 2 Detour Route  
Not suitable for large or towing vehicles

Joins to Map 2

Version Date June 2012

**MAP 1**  
SH 1 Pukeuri





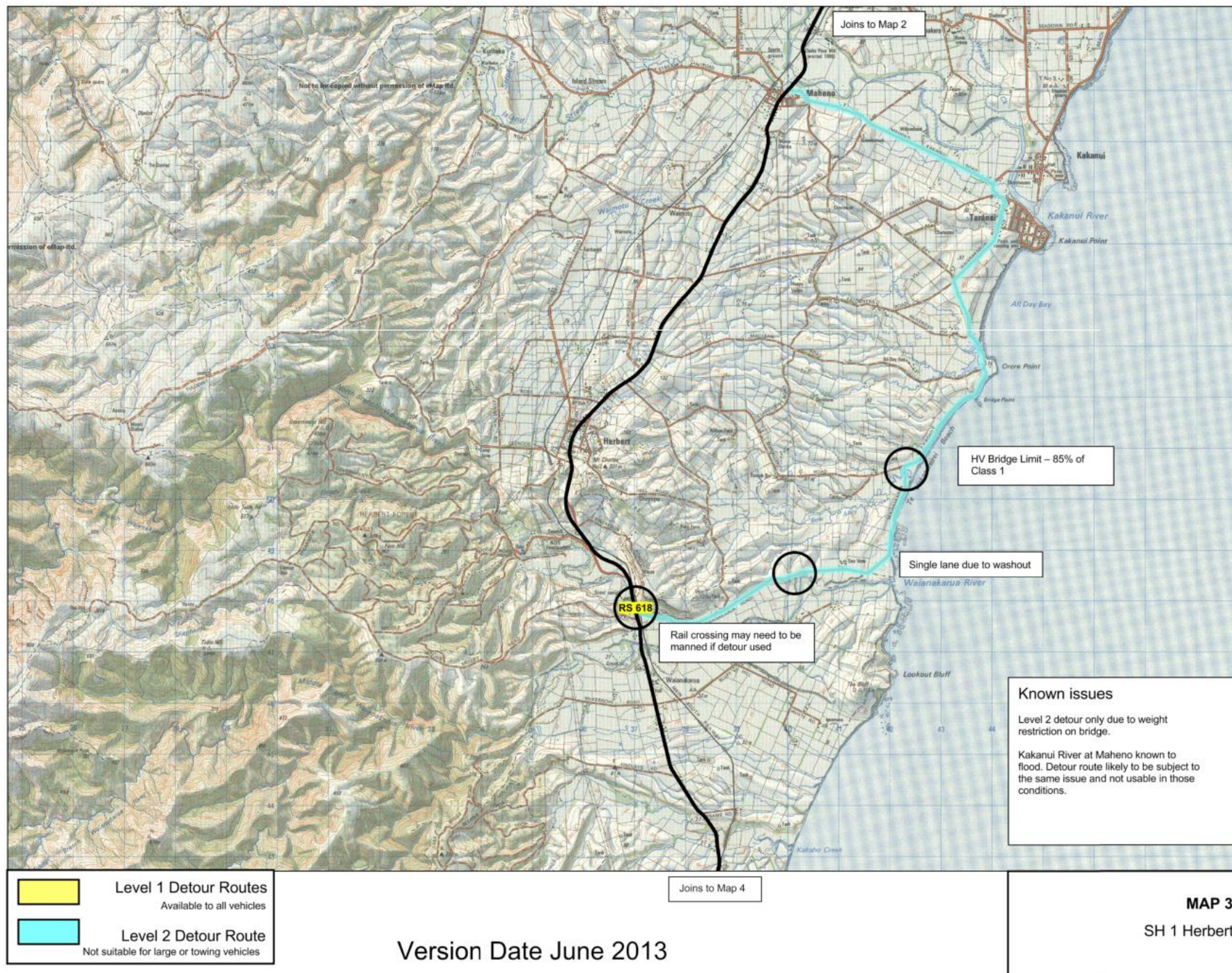
- Level 1 Detour Routes**  
Available to all vehicles
- Level 2 Detour Route**  
Not suitable for large or towing vehicles

Joins to Map 3

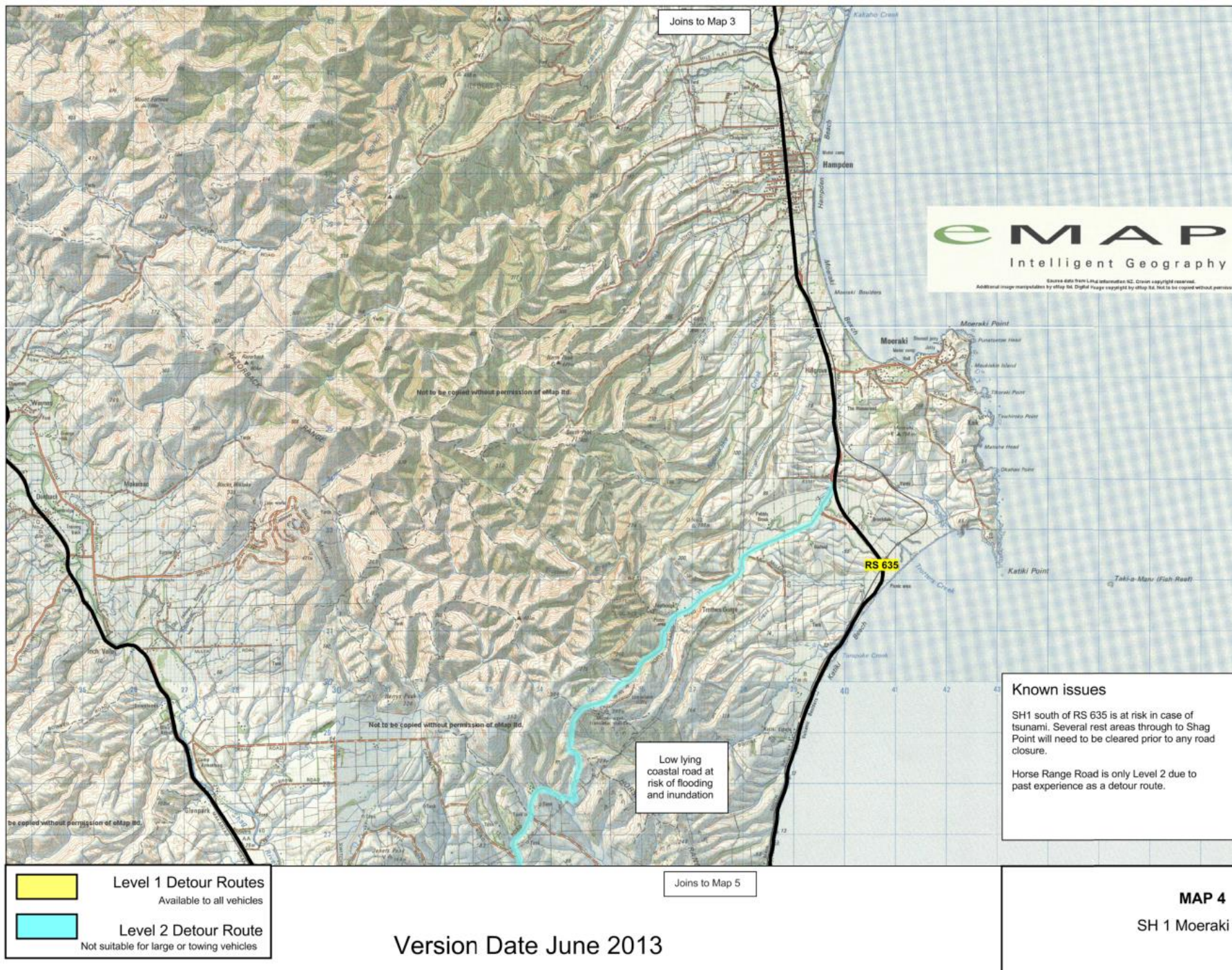
Version Date June 2013

**MAP 2**  
SH 1 Oamaru

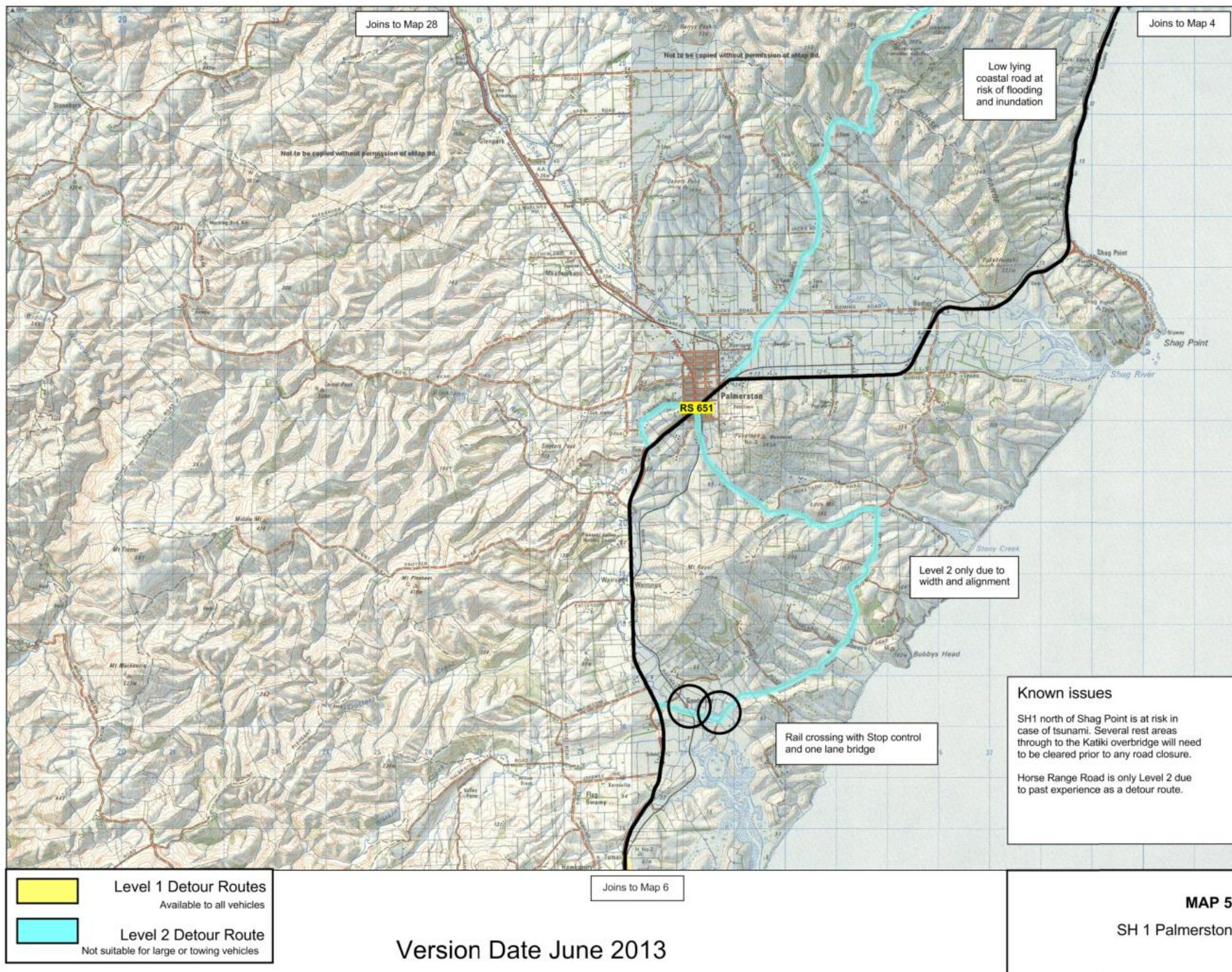




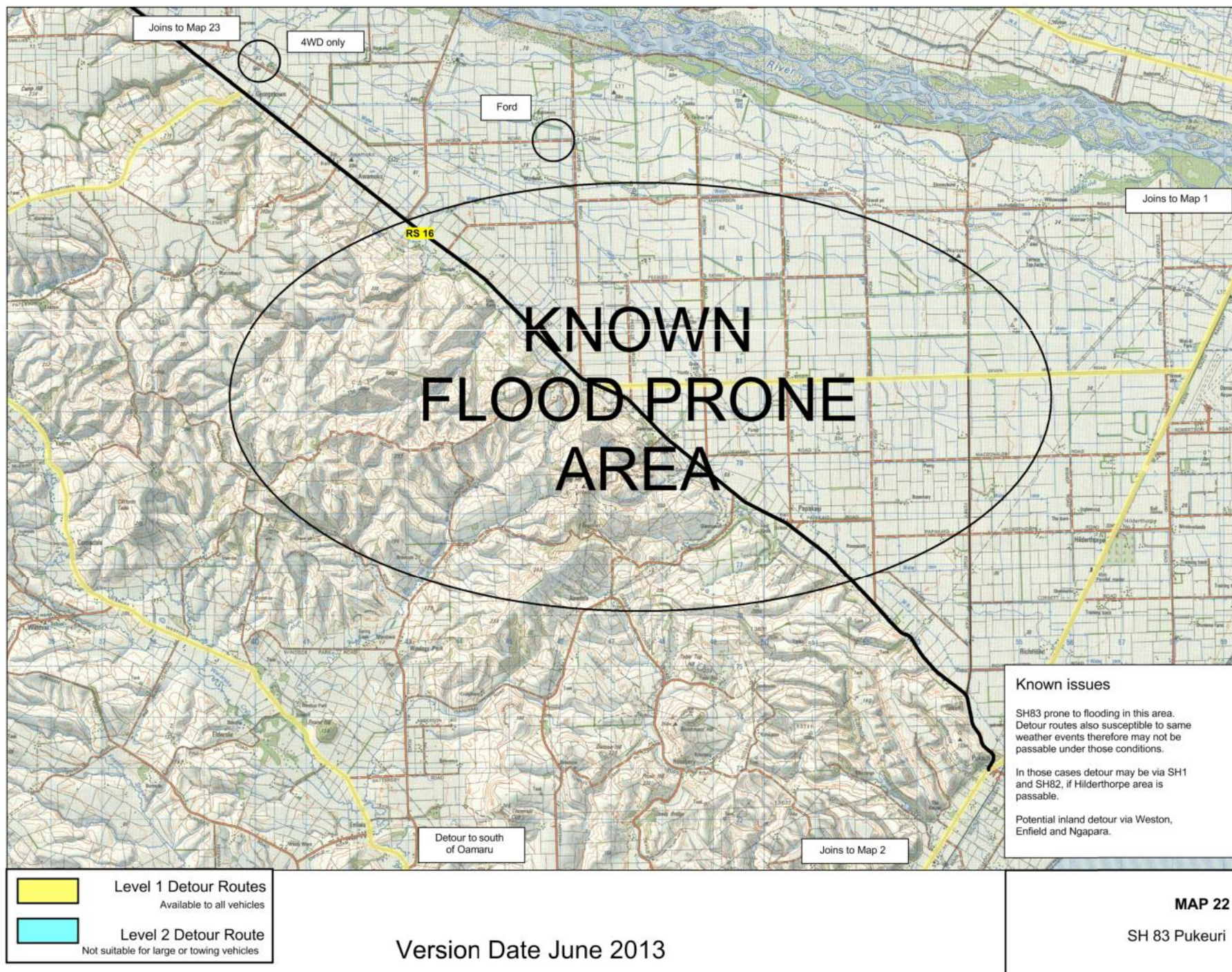




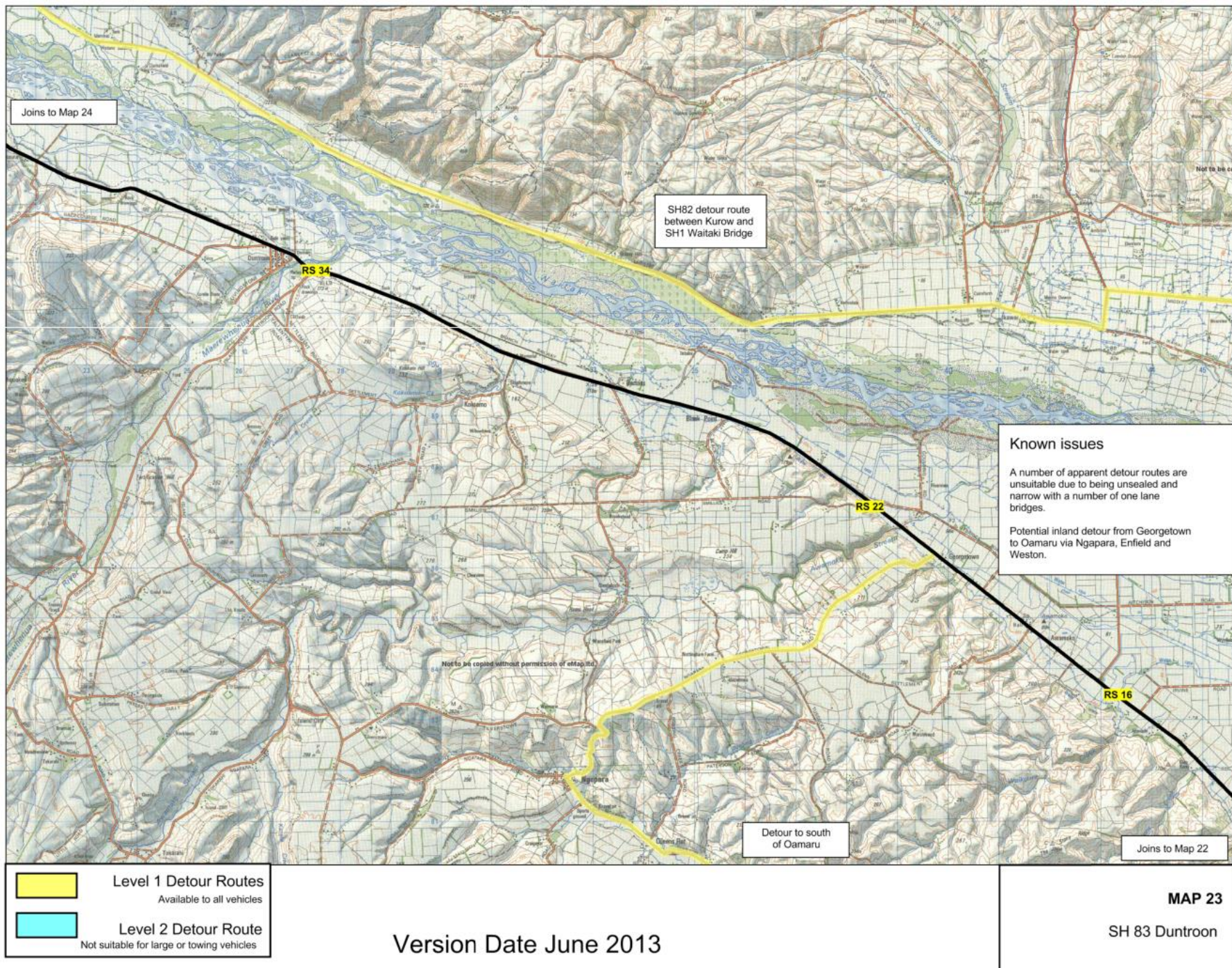




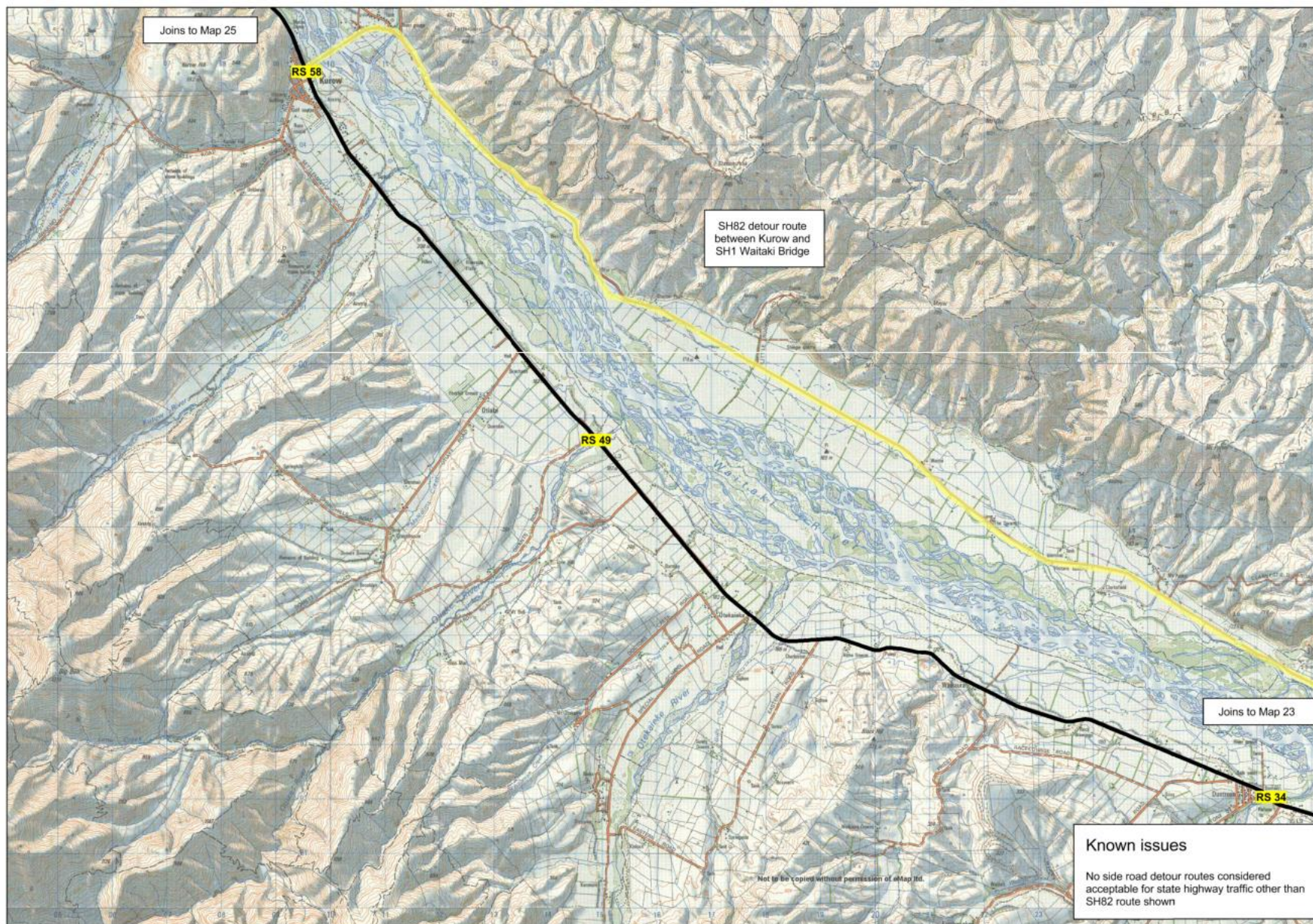












**Level 1 Detour Routes**  
Available to all vehicles

**Level 2 Detour Route**  
Not suitable for large or towing vehicles

Version Date June 2013

**MAP 24**

SH 83 Kurow



