

COMMUNITY ENGAGEMENT  
**STAGE 1** SUMMARY

Have YOUR say!

# OAMARU HARBOUR SPACE

PAST ► PRESENT ► FUTURE

## WHAT'S YOUR VISION FOR THE FUTURE OF THE OAMARU HARBOUR AREA?

We're looking to develop a masterplan to shape the development of the Oamaru Harbour Area over the next 30 years and beyond.

A masterplan is a dynamic long-term planning document that provides a conceptual layout to guide future growth and development. Master planning is about making the connection between buildings, social settings, and their surrounding environments.

Throughout November 2018 Waitaki District Council carried out a community engagement process to help identify what people find special about the Oamaru Harbour Area and what they see as its future.

The survey asked three key questions:

- What do you like the most about the Oamaru Harbour Area?
- What would you most like to see changed at the Oamaru Harbour Area?
- Looking ahead, in 30 years what do you want the Oamaru Harbour area to look like and how do you think it should function?







COMMUNITY ENGAGEMENT  
INFORMATION SESSION AT  
OAMARU OPERA HOUSE



DROP-IN EVENING  
AT SCOTT'S BREWERY



YOUTH ENGAGEMENT WITH  
WAITAKI YOUTH COUNCIL  
FACEBOOK/YOUTUBE VIDEO



POP-UP ENGAGEMENT STALL AT  
OAMARU FARMERS MARKET



YOUTH ENGAGEMENT SESSION  
AT HIGH SCHOOLS



COMMUNITY ENGAGEMENT  
AT REST HOMES



## THIS IS ONLY THE BEGINNING

Thank you to everyone who took the time to share their thoughts in this early 'ideas and insights' stage of the HarbOUR Space consultation process. The feedback you shared will help form a vision and key objectives for the project. We hope you will continue be involved as we progress through the project and encourage others to take part too.

This was the first of many community conversations – there will be lots more opportunities to get involved as we progress.

## OVER THIS ONE MONTH ENGAGEMENT PERIOD WE HAD:



## YOU CAN READ ALL OF THE COMMUNITY FEEDBACK RECEIVED ON OUR WEBSITE:

[www.waitaki.govt.nz](http://www.waitaki.govt.nz) or try our interactive tool at [http://bit.ly/Oamaru\\_Engagement](http://bit.ly/Oamaru_Engagement) to dissect our survey results by demographics such as age, location and gender.





RESTORE  
GRAVES  
TRACK

WE CAN CHOOSE TO  
DO NOTHING.

MORE STEAM,  
LESS PUNK

More natives,  
local plants,  
biodiversity.

No accommodation  
within 1km of  
harbour

RELOCATE  
MCKEOWN'S

Protect  
wild-life - it is  
their home too!

Keep lots of  
green spaces

WHY NOT  
CONSIDER AN  
AQUARIUM?

NO BOOZE,  
SORRY SCOTTS  
YOUR TIME IS UP

*make it a  
Natural Scenic  
Reserve*

plan for sea  
level rise &  
climate change

Outcomes to have a quadruple  
bottom line focus – social  
impact, environmental  
impact, commercial impact,  
cultural impact.

get rid of  
stinky birds

fewer cars,  
no more carparks

GET RID  
OF THE  
COMMERCIAL  
BUILDINGS

We need a wine bar  
with a wide selection  
of Otago wines please.

NO ZIPLINE  
NO FLOATING  
HOTEL

NO WIRES,  
POWER OR  
OTHERWISE.

PARK SAILING SHIP  
AS ATTRACTION

Yes to  
neo-classical  
facades

MORE BOAT  
BUILDING



## A FEW COMMENTS – *post-it notes*

*‘Historic ship education experience and virtual reality and augmented reality integrated.’*

*‘Restore Graves Track so that people can safely access and view the volcanic layers as part of the Geopark.’*

*‘Try to keep most of area traffic free, it works in all European cities.’*

*‘Hot tubs in whisky barrels beside the bike-park.’*

*‘Try a vintage ship moored at Sumpters Wharf for accommodation.’*

*‘Do not want zip-line or floating boatel’*

*‘Oamaru exists in its present state because of the tourists. Without them there would be not enough money to do any development.’*

*‘The harbour is for residents of Oamaru to enjoy. It has a natural beauty that can be explored without augmentation. It is not for tourists, although they may enjoy it also.’*

*‘Preserve what only we can do best, nowhere else in the country has such a rich area of heritage buildings and wild-life. Establish a green belt across the harbour area and avoid break-ins up open areas.’*

*‘Good heavens, what is the fuel depot still doing there?’*

*‘Restore Sumpter Wharf and protect Shag Colony’*

*‘Cafes – horse drawn carriages.’*

*‘Any new buildings in the red area, to be only one story-high. To retain existing houses and their view.’*

# HARBOUR SPACE SURVEY RESULTS



**OAMARU HARBOUR SPACE**  
PAST ► PRESENT ► FUTURE

**1 Age**

☐ Under 18

☐ 18 - 34

☐ 35 - 49

☐ 50 - 64

☐ Over 65

**2 Gender**

☐ Male

☐ Female

☐ I don't wish to identify with a specific gender

**3 Where do you permanently live?**

☐ Oamaru

☐ Elsewhere in the Waitaki District

☐ Elsewhere in New Zealand

☐ Overseas

**4 What do you like the most about the Oamaru Harbour Area?**

\_\_\_\_\_

\_\_\_\_\_

\_\_\_\_\_

**5 What would you most like to see changed at the Oamaru Harbour Area?**

\_\_\_\_\_

\_\_\_\_\_

\_\_\_\_\_

**6 Looking ahead, in 30 years what do you want the Oamaru Harbour Area to look like and how do you think it should function?**

\_\_\_\_\_

\_\_\_\_\_

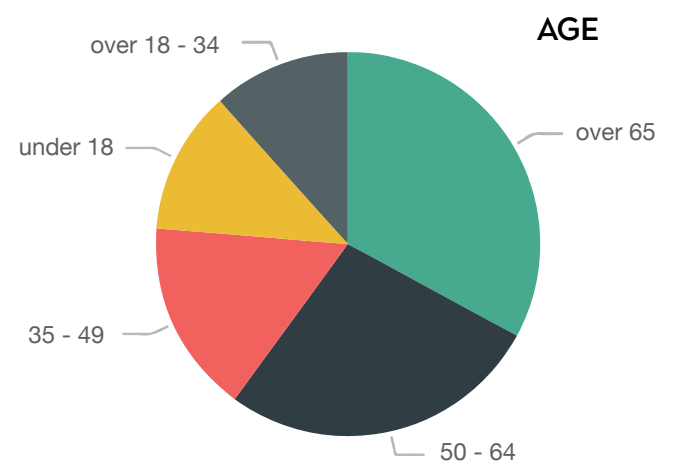
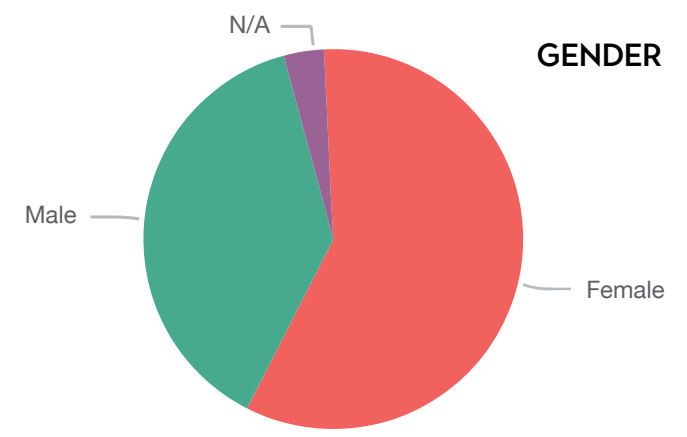
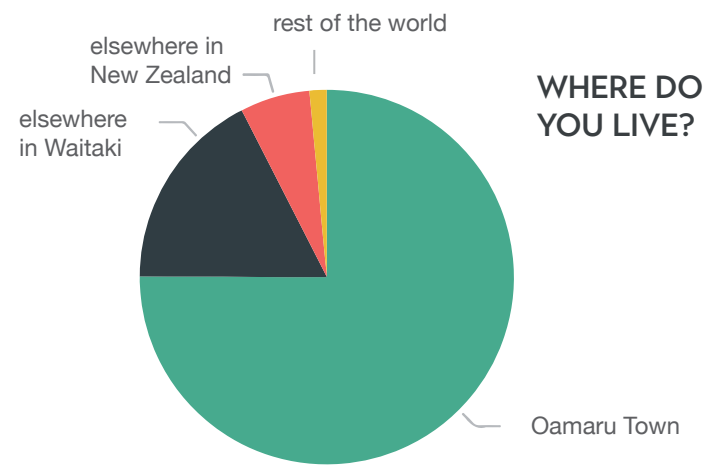
\_\_\_\_\_

Please return this survey to Waitaki District Council offices at 20 Thames St, Oamaru, post to Private Bag 50058 Oamaru 9444 or email to [consult@waitaki.govt.nz](mailto:consult@waitaki.govt.nz) by Friday 30 November 2018.

Visit our website and follow us on facebook for more information



**Waitaki**  
DISTRICT COUNCIL  
TE KAUNHIERA A ROHE O WAITAKI





SMALL LOCALS NEW WILDLIFE CLOSE  
TRANQUILITY ENJOYING FEEL OPEN SPACES  
SAFE WALK PEACE ACTIVITIES BOATS TIME  
FAMILIES ENJOYMENT HERITAGE OAMARU UNIQUE  
ROWING HISTORIC BUILDINGS TOWN KIDS  
ACCESS STEAMPUNK CAFE OPEN AREAS BEACH OLD  
WATER SHOPS LIFE PEACEFUL LOVE VICTORIAN PRECINCT  
ENVIRONMENT PEOPLE ENJOYING FAMILY VISTORS  
SPACE HISTORY BIKE PARK BREAKWATER BEING  
NATURAL VIEWS ATMOSPHERE PLACE  
COMMUNITY SHAGS BEAUTY PLAYGROUND COMMERCIAL  
BEAUTIFUL FRIENDLY NATURE SWIMMING  
CHILDREN SEA BIKES PLAY  
LOVELY VIEW WALKING  
GALLERY PENGUINS  
MARKETS BUILDINGS  
GALLEY WHARF  
LOOK-OUT  
WILDLIFE  
QUIET

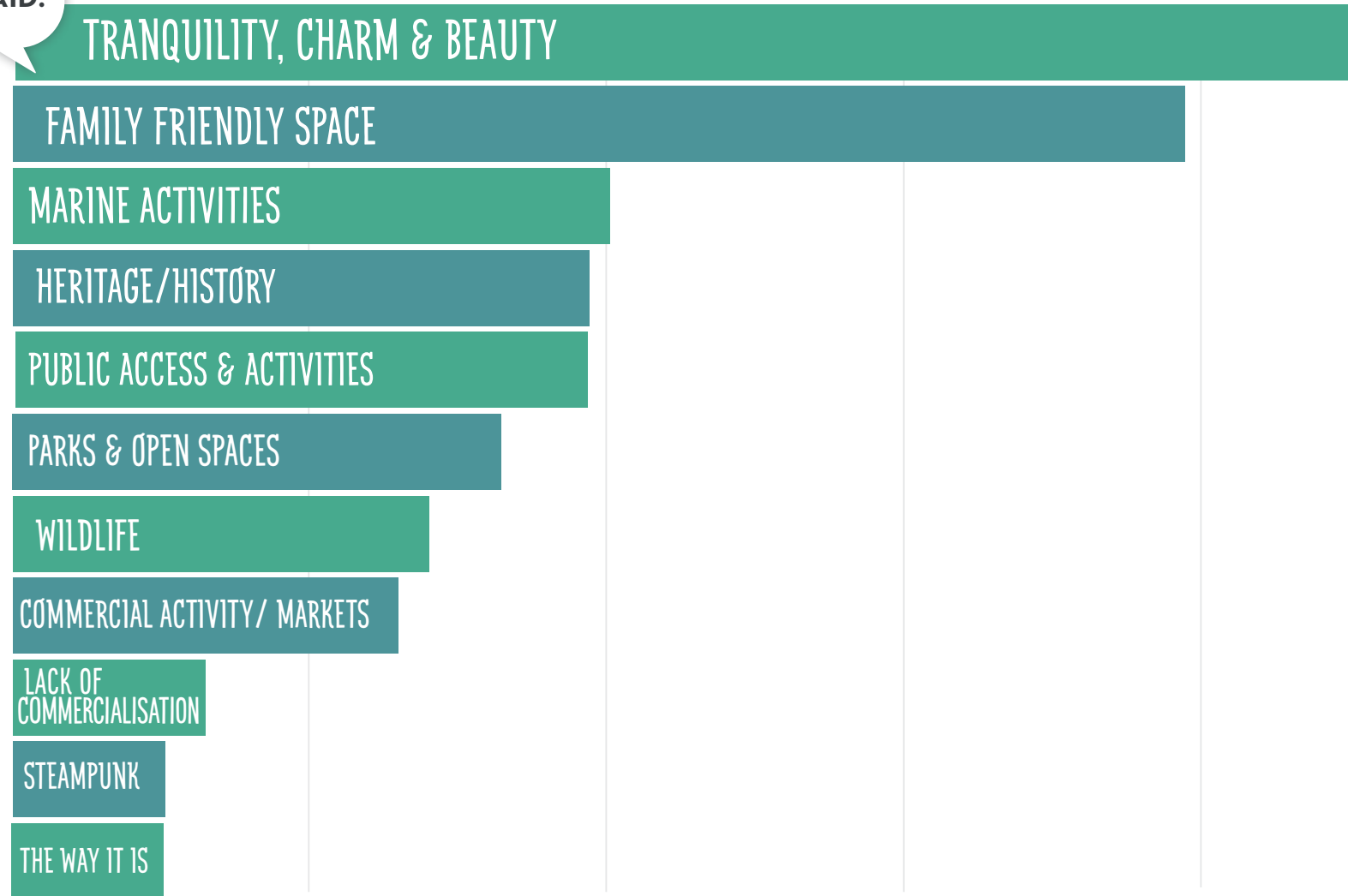
*what you love*  
ABOUT OUR OAMARU  
HARBOUR SPACE

WE ASKED:

WHAT DO YOU LIKE THE MOST ABOUT  
THE ŌAMARU HARBOUR AREA?

YOU SAID:

THEMES



0%

10%

20%

30%

40%

50%



## A FEW COMMENTS – *what you like*

*‘Peaceful quiet atmosphere, wildlife, beauty of harbour with picturesque buildings, striking light reflected in water, facility to use all manner of boats in, paddleboards etc.’*

*‘How undeveloped it is, and how accessible it is for all; its gritty, real character; its birdlife, it’s quiet, it’s immediate, raw history.’*

*‘It is slowly becoming more cohesive as an area for families/tourists/locals. The park, bike park and improved side walks etc are great. The esplanade walkway is good and can be further developed to the areas between the penguin colony and friendly bay. Markets are great.’*

*‘How in the nearly 7 years we have lived here how its gone from a wasted space to a vibrant community area.’*

*‘Safe area for children to play - playground beach walks. Quiet relaxed place to walk the dog, walks have lunch with friends etc. enjoy the seasons forever changing there.’*

*‘The historic area and the fact that it is conserved in such a good manner which you don’t see very often outside of Europe. Also the view onto the ocean is very nice. Nothing that blocks your view when you watch the sunset/sunrise.’*

*‘The atmosphere created by the businesses, activities and facilities that make the place attractive for all members of families, young, old and in between. The harbour area is a really nice place to be.’*

*‘Sundays are the best fun and fete & steam punk playground for kids.’*

WE ASKED:

# WHAT WOULD YOU MOST LIKE TO SEE CHANGED AT THE OAMARU HARBOUR AREA?

YOU SAID:

MORE AMENITIES AND ACTIVITIES

LEAVE IT THE WAY IT IS

IMPROVEMENTS TO EXISTING FACILITIES

NO ZIPLINE AND/OR FLOATING HOTEL

REMOVE FUEL DEPOT

INCREASED BEAUTIFICATION & PLANTING

IMPROVE VESSEL & WALKING ACCESS

REPURPOSE/REFURBISH HERITAGE BUILDINGS

MORE COMMERCIAL ACTIVITY

LESS COMMERCIAL ACTIVITY

YES TO FLOATING HOTEL/ZIPLINE

MORE WILDLIFE PROTECTION

REMOVE SHAGS

THEMES

0% 5% 10% 15% 20% 25% 30% 35%



## A FEW COMMENTS – *what you'd change*

*'Improvement of the Oamaru creek & railway station connection down to the harbour area. Opening & maintained access of the graves walking track around the bushy beach.'*

*'Moving McKeowns out to north business park and make more green space in its place.'*

*'Very little. It needs to remain a small town-recreational area for local people- we are not an adventure playground and the harbour needs to reflect this with sympathetic work.'*

*'Nothing!'*

*'I would like to see 'something' done about the old wool sheds on waterfront road. They are an eyesore. Maybe apartments. I don't agree with a floating hotel as i think the green space by proposed area needs to stay and be beautified. Picnic tables and BBQs provided in the area would be good.'*

*'No change but maybe continue to tidy up areas in need of attention. For example more green areas. More plenty of natives and other plants.'*

*'Huge tidy up of the friendly bay beach area. Removal or "camouflage" of industrial areas. More seating and rubbish bins along promenade to penguins. Make more inviting & safe at night - lighting.'*

*I would like to see a luge put in above the quarry with a car park at the quarry with a gondola going up to it. also I would like to see more bike tracks added with multiple levels of skill from beginner to professional.'*

*'I am in favour of the zipline. With no burden on Citizens would be another addition to family fun at the bay and an attraction to the bay and an attraction to the town.'*

WE ASKED:

LOOKING AHEAD, IN 30 YEARS WHAT DO YOU WANT THE  
ŌAMARU HARBOUR AREA TO LOOK LIKE AND HOW DO YOU  
THINK IT SHOULD FUNCTION?

YOU SAID:

THE WAY IT IS

MAINTAIN AND IMPROVE IT AS A COMMUNITY ASSET

PROTECT THE AREA'S HERITAGE

IMPROVE THE NATURAL ENVIRONMENT

A FAMILY FRIENDLY PLACE

IMPROVED TOURISM OPPORTUNITIES

MORE MARINE ACCESS & ACTIVITIES

DEVELOP HARBOUR AS A THRIVING HUB

MORE COMMERCIAL  
OPPORTUNITIES

MORE SMALL  
BUSINESSES

BETTER  
ACCOMODATION

PROTECT UNIQUE  
CHARACTER

THEMES

0%

5%

10%

15%

20%

25%

30%



## A FEW COMMENTS – *what's your vision for the future*

*'A hub where people enjoy coming to - to eat, to shop, to gather with friends and family, take in the view. More eateries, drinking-spots (breweries), shops, markets. Develop awesome markets which creates more foot-traffic. We want to create a hum about the place full of fun, energy, excitement and vitality!'*

*'It should have a salt water pool!!!'*

*'It would be nice to see the whole area linked together and visually improved with some interesting features.'*

*'The area is beautiful but in 30 years we need to keep up with the future.'*

*'Similar to present. Ensure access to water for sports & recreation are maintained. Retain open spaces. Do not allow encroachment of buildings to spoil the views.'*

*'More things to do beyond spending time at the playground or cafes/restaurants.'*

*'I think the harbour area should stay the same. it's a really lovely area now. It is a harbour after all. Please please please no ziplines, floating hotels or whatever other out of the ordinary ideas are suggested.'*

*'The Harbour should remain a naturally picturesque area, not cluttered with tourist gimmicks that will be completely at odds with what is already there. Enhance with lighting and planting etc but don't start putting modern, ugly buildings and tourist related attractions in.'*

*'More things to do beyond spending time at the playground or cafes/restaurants.'*

*'A little Akaroa like but with our Oamaru flare to add uniqueness and make our town standout!!!!'*

*'Humming, but still unique.'*

*'Still a low key place to relax and hang out.'*

## A FEW COMMENTS – *what's your vision for the future*

*'In 30-50 years I want the Oamaru Harbour to be a Listed UNESCO World Historic Harbour and Historic Precinct Site. We MUST PROTECT all that we have, as it is an irreplaceable TREASURE.'*

*'I would like to see more visitors arriving by boat and staying a few nights at Oamaru. (Not big cruise ships though).'*

*'Put a large monument or something that will leave an impression that they are in Oamaru. Eg steampunk. This can be placed on the lookout hill which can also be lit up at night.'*

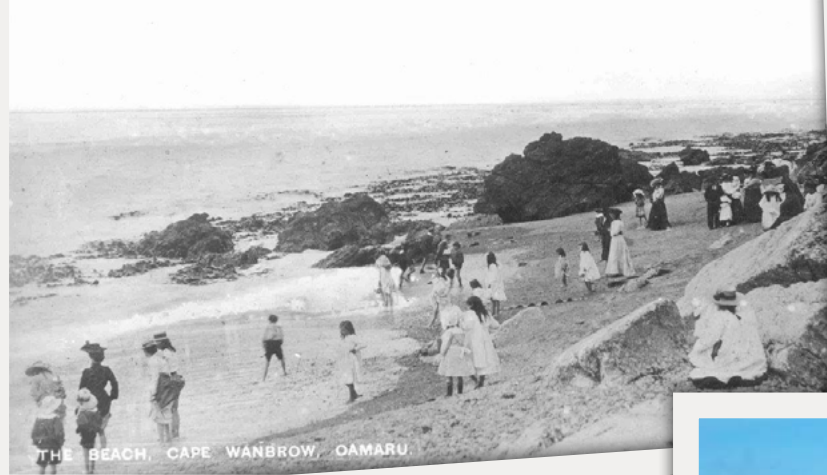
*'Have a water park with slides and everything'*

*'A 5 star hotel possibly built where the Harbour View rest Home is at present McKeown Petroleum facilities no longer where they are at present, leaving room for possible recreational development'*

*'Possibly a Marina built for the town to use, wharfs maintained and replaced before they become more run down, kept open so our young people can learn to sail, fish, and other boating skills ,rowers can still train.'*

*'A social and cultural precinct with plenty of room for walking, eating, children playing, boats for charter and hire. Passive, relaxing atmosphere. The old red sheds maintained and occupied by artisans and artists.'*





[www.waitaki.govt.nz](http://www.waitaki.govt.nz)



**Waitaki**  
DISTRICT COUNCIL  
TE KAUNIHERA A ROHE O WAITAKI