



Waitaki

DISTRICT COUNCIL

TE KAUNIHERA Ā ROHE O WAITAKI

Notice of Meeting

and

AGENDA

of the

Assets Committee

in the

**Council Chamber, Third Floor
Waitaki District Council Headquarters
20 Thames Street, Oamaru**

on Tuesday 1 May 2018

Assets Committee Membership:

Cr Bill Kingan (Chair)
Cr Guy Percival (Deputy chair)
Cr Jeremy Holding

Mayor Gary Kircher (ex Officio)
Deputy Mayor Melanie Tavendale
Cr Hugh Perkins

Assets Committee Meeting

Tuesday 1 May 2018

**Council Chamber, Third Floor
Waitaki District Council Headquarters
20 Thames Street, Oamaru**

	Page
1. Apologies	
2. Declarations of Interest	
3. Confirmation of Previous Meeting Minutes	
• Assets Committee 20 March 2018	3 – 6
4. Draft Government Policy Statement for Land Transport 2018	7 – 9
• Report and Recommendation	
5. Springfield Road Pipeline	
• Report and Recommendations	10 – 13
6. Assets Group Activity Report (6 March – 16 April 2018)	
• Memorandum and Recommendation	14 – 35

Assets Committee Members:

Cr Bill Kingan (Chair)
Cr Guy Percival (Deputy Chair)
Cr Jeremy Holding

Mayor Gary Kircher (ex Officio)
Deputy Mayor Melanie Tavendale
Cr Hugh Perkins

Waitaki District Council**Assets Committee**

**UNCONFIRMED MINUTES of Assets Committee Meeting of the
Waitaki District Council held in the Council Chamber,
Waitaki District Council Headquarters, 20 Thames Street, Oamaru
on Tuesday, 20 March 2018 at 9.53am**

Present	Cr Bill Kingan (Chair), Cr Guy Percival (Deputy), Cr Jeremy Holding, Cr Hugh Perkins, Deputy Mayor Melanie Tavendale; Mayor Gary Kircher
In Attendance	Cr Craig Dawson Cr Peter Garvan Cr Jim Hopkins Cr Jan Wheeler Cr Colin Wollstein Fergus Power (Chief Executive) Neil Jorgensen (Assets Group Manager) Paul Hope (Finance and Corporate Development Group Manager) Lisa Baillie (People and Culture Group Manager) Lichelle Guyan (Heritage, Environment and Regulatory Group Manager) Bill Chou (Information Services Group Manager) Erik van der Spek (Recreation Manager) Renee Julius (Property Manager) Martin Pacey (Water Services and Waste Manager) Grant Rhodes (Projects and Assets Officer) Helen Algar (Community Safety and Development Officer) Elton Crane (Waitaki Road Safety Coordinator) Ainslee Hooper (Governance and Policy Advisor)

At 9.53am, the Chair declared the meeting open and welcomed everyone present.

1. Apologies

There were no apologies.

2. Declarations of Interest

There were no declarations of interest.

3. Confirmation of Previous Meeting Minutes

The Chair signalled his intention to confirm the public excluded minutes of the previous meeting (13 February 2018) in the public session of this meeting, as Agenda Item 3(b), provided there would be no discussion on their contents. When no Councillor said they wished to speak to those minutes, the Chair confirmed he would proceed as intended.

(a) 13 February 2018 Meeting – Public Minutes

RESOLVED

AC 2018/009

Deputy Mayor Melanie Tavendale / Cr Hugh Perkins
That the Assets Committee confirms the minutes of the public meeting held on 13 February 2018, as circulated, as a true and correct record of that meeting.

CARRIED

(b) 13 February 2018 Meeting – Public Excluded Minutes

RESOLVED

AC 2018/010

Deputy Mayor Melanie Tavendale / Cr Hugh Perkins
That the Assets Committee confirms the minutes of the public excluded meeting held on 13 February 2018, as circulated, as a true and correct record of that meeting.

CARRIED

4. Kurow Irrigation Race Easement

The report, as circulated, sought to formalise existing occupation rights of the Kurow Duntroon Irrigation Company Limited to convey water across recreation reserves by granting easements.

RESOLVED

AC 2018/011

Deputy Mayor Melanie Tavendale / Cr Jeremy Holding
That Council directs the Chief Executive to grant easements for the right to convey water, over Part Section 2, Block XVI, Town of Kurow and Part Lot 2A, SO 4774 to the Kurow Duntroon Irrigation Company Limited, subject to notification and the consideration of any submissions.

CARRIED

5. Draft Waste Management and Minimisation Plan

The report and attachments, as circulated, sought Council's approval of the Draft Waste Management and Minimisation Plan 2018-24 (Statement of Proposal) and Summary of Information to go out for public consultation from Thursday 29 March until Monday 30 April 2018 by undertaking a Special Consultative Procedure in accordance with the requirements of the Waste Minimisation Act 2008 and Local Government Act 2002.

Councillors worked through the draft documents, asking questions and requesting some minor changes. It was noted that any changes requested today would be incorporated into a revised draft going into the 27 March 2018 Council Meeting agenda which was due for publication tomorrow. At that stage, Councillors would have another opportunity to make minor changes before a Council-approved draft was released for public consultation.

During discussions, the meeting was adjourned at 10.02am and reconvened at 10.15am.

RESOLVED

AC 2018/012

Mayor Gary Kircher / Deputy Mayor Melanie Tavendale

The Assets Committee recommends:

That Council:

- 1 Approves the attached Draft Waste Management and Minimisation Plan 2018-24 (Statement of Proposal) and Summary of Information to go out for public consultation from Thursday 29 March until Monday 30 April 2018.
- 2 Notes that a Special Consultative Procedure, in accordance with Local Government Act 2002 (LGA), is required as part of the mandatory six-yearly review of Council's Waste Management and Minimisation Plan
- 3 Notes the attached Draft Waste Management and Minimisation Plan 2018-24 (Statement of Proposal) and Draft Summary of Information is intended for public consultation.
- 4 Notes the attached Communication Plan.
- 5 Notes that all community feedback on the Draft Waste Management and Minimisation Plan will be considered following closure of the submission period on 30 April and before the Draft Plan is adopted in June 2018, and that an opportunity for verbal submissions will be provided in conjunction with the Draft Long Term Plan 2018-28 submission hearings.

CARRIED

Deputy Mayor Melanie Tavendale then put forward a motion that “officers bring back to Council some costings around options for recycling depots in the district and in particular in Kakanui”. Group Manager Neil Jorgensen offered to answer in place of the Chair calling for a seconder, and his request was granted. Mr Jorgensen told the meeting that small rural recycling depots (eg Enfield) would be about \$15k per annum, and that more complex and larger areas like Kakanui would need to be costed separately.

Given that advice, the Deputy Mayor withdrew her motion, and suggested that an addition be made to the document somewhere that other options may in time become available.

Group Manager Neil Jorgensen noted that there would be time for Councillors to alter the plan once submissions had been considered, before a final version was adopted at the June Council Meeting.

6. Waitaki Road Safety Coordinator Update

The memorandum, as circulated, presented information on the Road Safety Coordinator role and how it works in with the nation-wide programmes of the New Zealand Transport Agency (NZTA) as well as complimenting the Roding Unit.

Group Manager Neil Jorgensen introduced the report and Elton Crane who is undertaking the role of Road Safety Coordinator. Key discussion points were:

- (a) Waitaki's ranking of being in the top five districts in New Zealand for crashes at rural intersections was a real concern, and this role would continue to be important to addressing that education and local initiatives aligned to national campaigns.
- (b) That bad driver behaviour, rather than poor quality roads, were at the heart of accidents on the road, as borne out by statistics.
- (c) The type of radio advertising used to get across road safety messages (eg Real Radio – because it was a local channel)
- (d) Drivers aged 35 – 60 were a key target area, because statistics suggested they were the more difficult group to encourage to change their driving behaviour.

RESOLVED

AC 2018/013

Mayor Gary Kircher / Cr Jeremy Holding

That the Assets Committee receives and notes the information concerning the Waitaki district's road safety coordinator role.

CARRIED

The Mayor took the opportunity to thank Elton Crane for the excellent work he does in the road safety area. Whilst results were not always immediate or highly visible to all, any improvement was to be commended and celebrated. He congratulated Mr Crane for all he was doing to increase road safety in the community.

7. Assets Group Activity Report

The memorandum, as circulated, sought to inform the Assets Committee about the activities of the Assets Group for the period 23 January to 5 March 2018.

Key discussion points were:

- The very high speeds registered on Roundhill Road
- The costs of the two former tropical cyclones were 'sobering', given that they were unforeseen.
- Duntroon toilets (page 32, item 7) – Concern was expressed about a timeframe of up to 1-2 years before Land Information New Zealand (LINZ) might respond to Council's request to acquire land for these toilets. In response, the Mayor said he and the Chief Executive already had plans to meet with LINZ to discuss such purchases for community assets in the future.

UNCONFIRMED MINUTES – AC 20.03.2018

- Cr Jan Wheeler congratulated the Aquatics Manager and the Oamaru Swim Club for outshining the competition at the South Island zone of the nationals, and for its current ranking of 4th highest performing club in the country. The Aquatic Centre and the whole team were making a valuable contribution to the community.

RESOLVED

AC 2018/014

Mayor Gary Kircher / Deputy Mayor Melanie Tavendale

That the Assets Committee receives and notes the information.

CARRIED

The Chair noted that, with the public excluded minutes already confirmed under Agenda Item 3(b) of this meeting, there was no further business to be conducted. He declared the meeting closed, at 11.05am.

TO BE CONFIRMED on the 1st day of May 2018 in the Council Chamber, Waitaki District Council Headquarters, 20 Thames Street, Oamaru.

Chairperson

Assets Committee Memorandum

From Rooding Manager

Date 1 May 2018

Draft Government Policy Statement for Land Transport 2018

Recommendation

That the Assets Committee receives and notes the information.

Summary

This memorandum outlines the salient features of the recently released Draft Government Policy Statement on Land Transport ("the draft GPS") and predicting potential effects to Waitaki District's ability to meet community demands.

Purpose

The purpose of this memorandum is to present information on the draft GPS, breaking it down into segments that are more relevant for Waitaki District.

Background

The Draft GPS sets out the New Zealand Government's objectives and priorities for land transport. It is an interim document for financial year 2018/2019, and a second stage will be produced next year that completes the directional changes proposed.

There was a meeting held in Dunedin on 18 April between the combined Regional Transport Committee and New Zealand Transport Agency to provide a more detailed overview of the draft GPS. The outcomes from this meeting will be presented separately. All submissions to the draft GPS are to be with the Government by 2 May 2018.

The draft GPS is available on the website:

<http://www.transport.govt.nz/ourwork/keystrategiesandplans/gpsonlandtransportfunding/>

This webpage includes access to a Questions and Answers document which provides the best summary and explanations supporting the draft GPS and therefore is highly recommended for reading.

So, how does this draft GPS affect Waitaki?

With an operating annual budget around \$12m, any changes to allocations, categories or Financial Assets Rates may impact on the ability of Council staff to deliver core levels of service to the Waitaki community.

The draft GPS has signalled greater investment in local roads (non-state highways) in the fields of safety, access, environment and value. The first two items have key strategic priorities.

Safety

There will be a new road safety strategy which will look at local roads and speed management. Investment increases in footpaths and cycleways are mooted.

Further safety improvement works, underscored with tourism and cycling, are planned. State Highway 1 through Oamaru is ripe for re-evaluation. There could be a greater push for a blanket reduction of speeds on local/rural roads to 80km per hour. Each of these elements will require more community consultation and business case studies.

Access

Here the focus is on tourism connections and resilience – network and environment. A theme appears to be more expectations around multi-agency collaborations (one network).

Tourism is likely to be worked through, with other factors like Tourism Infrastructure Fund and Provincial Growth Fund. However, route resilience is one area staff are currently working on, and a business case has been commissioned to consider the impacts of tourism and scope important projects like Dansey's Pass improvements. The focus here should also add strength to the business case to replace Kakanui Point Bridge. Meeting freight demands remains essential to the economic wellbeing. The amount of new and greater capacity heavy commercial vehicles in relation to our rural roading network (farm gate to factory) needs more clarity.

Environment

This area has an urban focus plus greenhouse gas initiatives, and is not likely to have much impact outside endorsing cycle/pedestrian improvements to current plans.

Value for Money

There is a greater focus on uncertainties that affect outcomes being factored into decision making processes that take in or perform best across a wide range of different scenarios. Enhanced reporting is another expectation/requirement.

There is going to be far greater emphasis placed on developing business cases to support activities. This in itself may result in more professional support being required. Furthermore, the One Network Road Classification performance measures are undergoing some re-evaluation which is likely to add another layer of reporting complexity to Council's role.

Other factors

The draft GPS refers to 'mode neutrality', which simply means all land transport options are to be treated equally. Potentially, the downside could be the reallocation of funding – or how the cake is re-sliced. From this Council's perspective, it will be 'wait and see'.

There has been some comment about rail becoming part of the mix. Though the focus is on commuter rail, there is reference to inter-regional services but they are probably North Island based. If there is a move towards greater rail freight accessibility, it is unlikely – due to this district's transport routes – to provide material benefit or a reduction in demand to the Council's network.

Reference in the draft GPS to networks being funded to address increased network capacity to meet freight demands arising from economic growth suggests more flexibility through increased funding for local road improvements and maintenance (getting goods to market). This links to Access above, but is likely to be more state highway focused.

Financial Assistance Rate (FAR)

The draft GPS also refers to the Financial Assistance Rate (FAR) being revisited to support the Government's new priorities. Any change here will most likely have an effect on the way Council delivers a safe and affordable roading network to the Waitaki community.

Funding Changes to Activity Classes

Outside the metros and from Waitaki's perspective, the draft GPS has signalled a 248% increase in walking/cycling improvements, 42% increase in local road improvements, 81% increase in road safety, 22% increase in local road maintenance (this includes a proposal to include footpath maintenance to be funded from the National Land Transport Programme), and 31% increase in investment management (costs arising from increased reporting). These increases could go a long way to meeting the Council's elevated customer expectations, outlined in last year's survey on roading spend, should they be appropriately allocated.

Provincial Growth Fund

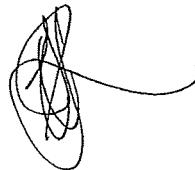
This is referenced as a separate means of enhancing economic development opportunities. It also links to remediating climate change effects. While it appears Otago has missed out on the first 'surge' (\$1b/year), there remains the next two years for applications to the Ministry of Business, Innovation and Employment. The business case currently in preparation for improvements to tourist experiences will assist this Council's likelihood for success. Such projects will need to be added into the Regional Land Transport Plan and publicly consulted through Council's Annual Plan (2019/2020). Network resilience is another factor that adds to the weight of submissions.

Comment

The draft GPS provides some significant shifts to the previous GPS, by proposing greater emphasis on safety and accessibility. Importantly, there is an apparent desire to shift spending back into local roads. Though there is comment about funding methods and models supporting the increases proposed, considerably more information is needed to evaluate impacts. For example, the matter of more comprehensive development contributions and the four well-beings (cultural, social, economic and environmental) potentially becoming part of the local government scene again suggests there may be an expectation that these avenues be exhausted as part of the funding process.

The challenges facing Waitaki remain unchanged and the draft GPS is unlikely, based on what has been released so far, to affect Council's delivery of a safe and affordable roading network in the interim. The draft GPS appears to be moving towards becoming more resource-hungry, and the (as yet unquantified) extra reporting requirements may well require increased expenditure on consultants or equivalent staff resource. If Council is successful in attracting funding for the tourist projects – and is willing to invest accordingly – then current staff and financial resources will lack capacity to meet the enhanced maintenance programme as well as the additional activities, unless some harder priority decisions are taken.

The Vision Zero appears to be a refreshing restart of road safety. Whether or not the Waitaki community is willing to consider the potential speed reductions associated with implementing this strategy is yet to be tested. Overall, the draft GPS could be simply an enhancement to 'business as usual', with relatively subtle changes not easily noticed by the community.



Michael Voss
Roading Manager

Neil Jorgensen
Assets Group Manager

Assets Committee Report

From Assets Group Manager

Date 1 May 2018

Springfield Road Pipeline

Recommendation

That Council contributes a budget of up to \$15,000 from unsubsidised roading budgets towards works associated with a private pipeline project that will keep pond levels below the existing level of Springfield Road east of Fortification Road.

Objective of the Decision

To keep Springfield Road open during periods of heavy and prolonged rainfall and subsequent increases in pond levels and – by doing so – assist adjacent landowners to have more productive land available for their operations.

Summary

It is proposed that Council contribute funding towards work to reduce the extent of water ponding that floods Springfield Road and adjacent farmland.

Summary of Decision Making Criteria

	No/Moderate/Key		No/Moderate/Key
Policy/Plan	No	Environmental Considerations	Moderate
Legal	No	Cultural Considerations	No
Significance	No	Social Considerations	Key
Financial Criteria	Key	Economic Considerations	Key
Community Views	Key	Community Board Views	No
Consultation	No	Publicity and Communication	No

Background

Springfield Road east of Fortification Road has regularly been submerged underwater due to a high water table and a dip in Springfield Road in the area. The water ponds and covers a substantial area of private land as well as over a 200m section of Springfield Road. A similar issue occurred in Fortification Road and has been resolved by raising the road in that area.

The road can remain effectively closed for several months as the water ponds and cannot escape. Evaporation is the only natural way that the water can reduce. This process is very slow. However, the neighbouring landowner has mechanically pumped the water out of the ponded area, and Council has contributed funds to cover that cost. This has needed to be done about once per year over several years, at a cost of around \$5k each event to Council and the landowner.

Summary of Options Considered

Option 1 – Contribute towards the cost of a private pipeline to keep the pond drained (recommended option)

The construction of a private pipeline to feed water into local irrigation schemes will enable the pond level to be managed so that it stays below the level of the existing road. The adjoining landowner is prepared to construct the pipeline, but has asked Council to cover the cost of pipe as well as construct a culvert under the road to help the process. Council's contribution to both the culvert and the pipeline would be \$15,000. The project would not be available for New Zealand Transport Agency (NZTA) co-investment.

Option 2 – Build up the road above the highest pond level

It is estimated that it would cost \$120,000 to build up the road to ensure it is above flood level. However, this would be eligible for NZTA co-investment through the minor improvement budget. This means the cost to Council would be \$54,000. This solution would ensure that the road

remained opened when the pond levels were high. However, it would mean that substantial areas of private property would be underwater.

Option 3 – Status Quo

This option means that the road would remain as it is and, if it became submerged, then consideration would be given to external pumping to reduce the water level. The water is likely to continue to be pumped into road stormwater channels.

Assessment of Preferred Option

Option 1 – Contribute towards a private pipeline to keep pond levels low

This option requires an investment of \$15k towards a project to enable the ponded water to be diverted into local irrigation schemes. This is an opportunity to provide benefit to both private and public good, and the quantum of investment is about three years of cost under the status quo option. The work can be funded from the \$20k unsubsidised roading budget.

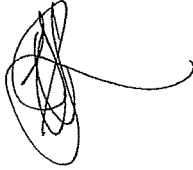
Having considered the options summarised above, the following conclusions have been reached:

1. An investment of \$15k into a shared pipeline gives both private and public benefit at a reasonable cost.
2. If the pipeline in the future was no longer operated, then raising the road is still available as a remedy at that time.
3. The work can be funded from existing budgets using the existing unsubsidised funding.



Conclusion

It is recommended that Council contribute funding towards a private pipeline project to reduce ponding levels in the vicinity of Springfield Road. This is a win-win outcome, in that ponding on private farmland is reduced and water is collected for irrigation, creating more productivity from the land and Springfield Road is open more often to the benefit of road users.



Neil Jorgensen
Assets Group Manager

Attachments

Additional decision making considerations

Additional Decision Making Considerations

The following matters have been considered in making the decisions.

Outcomes

We enable opportunities for new and existing business.

We provide and enable services and facilities so people want to stay here and move here.

We understand the diverse needs of our Community.

Financial Considerations

820m of 160mm culvert pipe is required with a cost of just over \$8,000.

A culvert under the road is estimated to cost \$4,000.

A contingency of \$3,000 has been allowed for officer time and other minor works identified onsite.

Assets Committee Memorandum

From Assets Group Manager

Date 1 May 2018

Assets Group Activity Report for the period 6 March 2018 – 16 April 2018

Recommendation

That the Assets Committee receives and notes the information.

Summary and Purpose

The purpose of this memorandum is to inform the Assets Committee about the activities of the Assets Group during the reporting period.

1. Roading Manager's Update

March and April were again business as usual, with the contractors keeping to their programmes and expenditure forecasts. The region was struck by a rain event late February (Cyclone Gita) and this has added \$300,000 of additional maintenance repairs to the contractor's programme. There is some concern that contractor resources throughout the regions are getting spread a bit thin and lack capacity, and Council could not take up the opportunity to undertake any new extra works (eg should visitor driver funds become available). However, staff are working closely with the contractor to ensure programme commitments are fully met by the end of the year. A spreadsheet prepared by SouthRoads is attached, which outlines performance and matters arising.

It is pleasing to report that the vacancy left by Ting Ge's departure last October has been filled by Josephine Wallace, which will allow the team to increase engagement with the community.

The Government recently released its draft Government Policy Statement (GPS) on Land Transport which sets out its priorities and investment strategies for the next financial year. Due to the changes to these strategies, there will be a further GPS for the 2019/2021 financial year. The policy has changed towards what is termed 'mode neutral' meaning all land transport is under consideration. This will likely enhance rail passenger transport along with cycling and pedestrian accessibility to networks. More detail on the GPS is attached as a Memorandum.

1.1. Customer Service – CRM Process

Operations

The remote rural roads project has commenced and the following roads have received advanced improvements:

- Roads programmed in Macraes area
- Roads programmed off Earthquakes Road

CRMs reflected the storm events, with an 89% respond rate and 97% resolution rate.

The issue raised a year ago over the amount of illegal dumping of rubbish off Bushy Beach Road and Beach Road has not gone away and is in fact showing signs of increasing in frequency. The option of erecting a hidden CCTV camera to monitor the more frequented sites is under consideration.

1.2. Communications

Date	Customer/Client	Outcomes
March/April	Stantec MWH	Kakanui Point Bridge/Severn Street Wall ILM for Tourism effects to network
	NZ Transport Agency (NZTA)	Organisational Status and future Liaison
	NZTA	Moeraki straits signage

	NZTA	SH1 Thames Street repairs/Downer LED lights
	Survey Waitaki	Waterfront Road design/Waiareka Park/Tutu Hill Road/Island cliff seal widening design
	DCL Consulting	Kakanui Bridge repairs Oamaru Creek pedestrian bridge design
	Terra MDC Ltd	Geotechnical investigations of slip sites including Test Street and drainage onto the Railway.
	Screen and Crush	Aggregate Supplies health and safety
	Whitestone Contracting Ltd	Aggregate supplies Memorandum of Understanding (MoU)
	Anderson Lloyd	MoU, aggregate supplies
	Otago Regional Council (ORC)	Regional Land Transport Plans and programmes
	Abercrombie & Associates	Road legalisations and stopping
	Waugh's Infrastructure Management	Drafting stormwater management plans for Environment Canterbury (ECan) and outline for ORC.
	KiwiRail	Waitaki Avenue crossing upgrade and Project financials
	Chorus	Access to road corridor compliance UFB2 programme
	Opus	Asset Valuations / Offer of service for Tenby St widening
	MPI	Stock driving

1.3. Projects

Well underway	Comment
Bridge and Structure Renewal Programme	Kakanui Point Bridge remedial works are completed within time and budget though some delays experienced with sealing of deck. Oamaru Creek Pedestrian suspension Bridge construction well underway. Building it on the old road alignment has minimised the chance archaeological discoveries that might have otherwise slowed construction. Meek Street Bridge repairs to stone abutment have commenced.
Resurfacing Programme	The resealing programme for Year 2 has been completed. Unfortunately the cost of raw bitumen has added some \$22,000 to the contract's expenditure (but within the contingencies set for this sort of increase).
Rehabilitation Programme	The rehabilitation sites have been completed.
Minor Improvement Programme (MIP)	The Waterfront Road realignment is well underway and progressing much as expected. The completion month remains May. Severn Street wall reconstruction of terraces 2 and 3 project has commenced with Stantec project managing the construction due to a shortfall of internal resources. The Ardgowan Road sealed widening project is 98% complete. The works have been sealed and road markings done. Minor drainage works to be completed.

Street Lighting LED Upgrade		The LED supply and install contract has been accelerated to ensure Council takes full advantage of the 85% FAR (NZTA indicated that it would cease 1 July 2018. So far the project will attract full benefits.
Draft Roading Business Case Approach 2018/2021		The Business Case is completed and made available for consultation in February as part of the RLTP process. There were no submissions.
Larger Projects (Prioritised)		
1	Kakanui Point Bridge Replacement	NZTA have favourably reviewed our initial business case and that leads to the next stage to develop an indicative and Detailed Business Case which provides greater levels of analyses.

1.4. Fatal and Serious Crashes in the Waitaki District: January – March 2018

- Information for April has not been released.

There were no fatal crashes in the Waitaki District during this timeframe.

There were three serious crashes on the state highway network and one serious crash on the Waitaki District Council roading network.

In summary, the predominant factors in these crashes were:

- Lost control
- Open Road
- Mid-block (between intersections)
- Light and in dry weather
- All were cars
- 'Driving too fast' and 'Alcohol' were the most common crash factors
- The majority were 'Crashes with object struck'
- 75% of these crashes were single vehicle crashes
- The most common type of licence was 'full'
- The estimated social cost of these crashes is \$3.7m.

2. Water Services and Waste Manager's Update

2.1. Customer Service

As of 1 July 2017, 1900 CRMs have been resolved by officers and SouthRoads, with 90% being resolved within the required timeframes.

2.2. Operations

Reticulation

SouthRoads workload remains high due to a large number of reactive repair and planned capital works on the go.

Neil Scott has been employed by SouthRoads as reactive works supervisor for the reticulation operations and maintenance contract. Mr Scott's knowledge of Council process and priorities will be of great benefit to SouthRoads and, in turn, Council and the community.

Solid Waste Facilities

Officers, in conjunction with a geotechnical engineer, are closely monitoring the subsidence of the Hampden Closed Landfill. Options for long-term management are being considered and will be discussed with ORC and Council in due course.

The contract with WasteCo to operate and manage Councils Resource Recovery Parks is set to expire in June. Officers have commenced discussions with WasteCo regarding a contract extension while the Waste Management and Minimisation Plan is being considered.

2.3. Communications

Date	Customer/Client	Outcomes
Multiple occasions	ORC	Various communications regarding general resource consent compliance, the draft Waste Management and Minimisation Plan, Oamaru and Hampden Closed Landfills and the Oamaru Water and Wastewater Capacity Studies.
Multiple occasions	ECan	Various communications regarding general resource consent compliance and the Ahuriri Stormwater Management Plan.
Multiple occasions	Public Health South	Various communications regarding general Health Act compliance, Water Safety Plan submissions, water shut down notifications and the Oamaru Water and Wastewater Capacity Studies.
Multiple occasions	Waitaki Resource Recovery Trust (WRRT)	Various communications regarding the WRRT site redevelopment and the draft Waste Management and Minimisation Plan.
Multiple occasions	NZTA	Various communications regarding construction works in State Highway road reserve.
Multiple occasions	Heritage NZ	Various communications regarding H2Our Health and Moeraki Water Improvements construction works.
Multiple occasions	KiwiRail	Various communications regarding construction works in Railway land.
Multiple occasions	Network Waitaki	Various communications regarding power outages (planned and unplanned) at a number of water and wastewater facilities.
Multiple occasions	Waitaki Developers	Various communications regarding subdivisions and developments i.e. Natural Chicken Company (Moeraki), McBrimar (Weston), Good Land Heights (Old Hospital Hill) and De Geest (Otematata).
Multiple occasions	North Otago BMX Club Inc	Communications regarding construction of the BMX track at the Oamaru Closed Landfill.
Multiple occasions	Ahuriri Community Board	Various communications regarding Otematata water reticulation issues, Ahuriri Resource Recovery Parks and the draft Waste Management and Minimisation Plan.
March	Audit NZ	Communications regarding the draft LTP, 3 Waters draft Asset Management Plans and unit processes.
March	Solid Waste Working Group	Workshop regarding the draft Waste Management and Minimisation Plan.
March	Environmental Protection Authority	Communications regarding participation of Palmerston Landfill in the Emissions Trading Scheme.
March	Otago and Canterbury Public Works Engineers	Attendance at IPWEA Branch Meetings.

Date	Customer/Client	Outcomes
March	Irricon	Communications regarding the proposed Kurow-Duntroon Irrigation Company pipeline from Kurow to Duntroon.
April	Waihemo Community Board, Waihemo Wastebusters, Hampden Community Energy, WasteCo, Whitestone Contracting Ltd, Awamoa Bins and Skips, Alliance Pukeuri, Otago Chamber of Commerce, Peter Murdoch Ltd, Medical Officer of Health	Communications regarding the draft Waste Management and Minimisation Plan.
April	H2OurHealth Landowners and Liaison Group	Newsletter regarding progress of the H2OurHealth (HamNak pipeline) project.
April	Tower Zone Consumers	Communications regarding a large water shutdown affecting 700 consumers.
April	WDC Departments (Environmental Health, Planning, Building Control), Ministry for Environment, Iwi, Federated Farmers, Fire and Emergency NZ, Waitaki Irrigators Collective	Communications regarding the Oamaru Water and Wastewater Capacity Studies.

2.4. Projects

Larger Projects (Prioritised)		
1	H2OurHealth (HamNak pipeline) Project	Pipework – installation 85% complete with 5km remaining. Testing and commissioning to follow. Pumpstation 1 – building construction underway. Pumpstation 2 – building construction complete. Electrical fit out underway.
2	Oamaru South Hill Water Reticulation Upgrades	Stage 1 complete.
3	Moeraki Water Improvements	Pipework through Hampden township - complete with service line connections and abandoning works outstanding. Pipework to the Natural Chicken Company - complete. Pipework to Moeraki Reservoir – to be commenced shortly. Pumpstation – building construction 90% complete.
4	Moeraki Wastewater Disposal Upgrade	Pre-construction seawater sampling is underway. Final design of the irrigation system is 95% complete. Approximately 3km of pipework has been installed in conjunction with the Natural Chicken Farm Company works.

5	Oamaru Tower Zone Capacity Improvements	Installation of pipework in Reservoir Road is complete with service line connections and abandoning works outstanding.
6	Hampden On-Site Wastewater Management	Approximately 25% of systems have been cleaned and inspected. There have been no reports of damaged systems posing a risk to public health to date.
7	Waste Management and Minimisation Plan Review	Draft plan released for public consultation. Submissions close 30 April.
8	Asset Management Plan (AMP) Update	Final drafts are under review.
9	Oamaru Water and Wastewater Capacity Study	Key stakeholders contacted requesting their input into establishing the appropriate design basis for the capacity studies.
10	Ohau Water Upgrade	Preliminary design underway.
11	Oamaru Landfill Closure	Assessment of the current cap underway by specialists. Methods to control stormwater and reduce cap and slope erosion are being considered.
12	Omarama Wastewater Treatment Plant Disposal Upgrade	Draft lease documents are with officers for review.
13	South Hill Microzone	Construction on hold due to lack of contractor resource.
14	Omarama Water Upgrade	Concept design has been completed. To be progressed further as soon as resource is available, with completion due in 2018.
15	Oamaru Water Supply Chlorine Analysis	Existing chlorine levels will continue to be analysed and options for improvement considered. Construction is anticipated to be completed in 2018/2019.
16	Sewer Lateral Ownership Assessment	Assessment has been completed and a report provided for officer review. This will be progressed further in 2018/2019.

3. Property Manager's Update

3.1. Customer Service

Since the commencement of the 2017/2018 financial year, Property has achieved a 98% response rate to CRM and a 100% resolution rate.

3.2. Operations

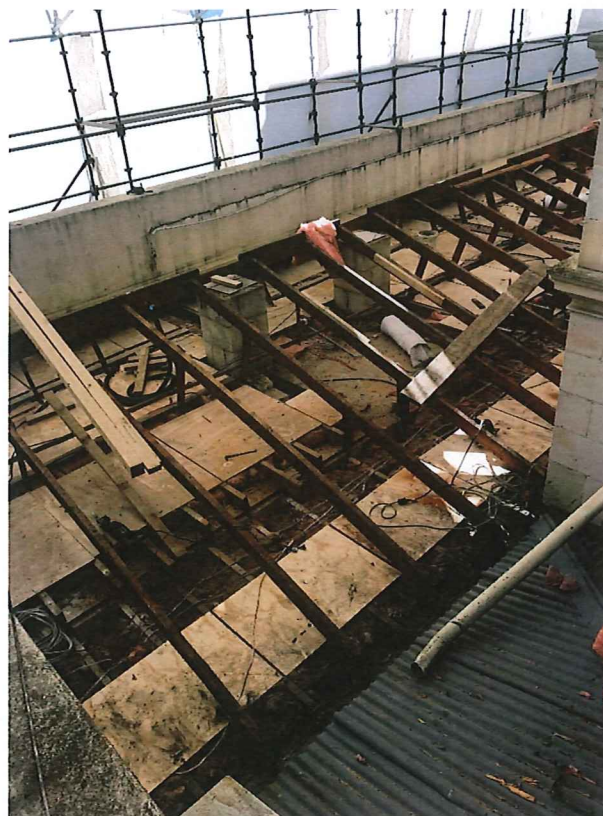
A number of renewal projects are underway:

- Community Housing Units – two in Palmerston.

3.3. Projects

Larger Projects		
1.	Court House	Project is progressing well. The roofing has been taken off all three roofs. Improvements to the internal gutters has commenced. Some of the steel work has been installed with the bottom portal frame now closed in.

2.	Harbour Visitor Accommodation	The team are currently engaging with preferred parties. More information will be provided as it becomes available.
3.	Harbour Area Development	Reports are going to the Harbour Area Committee on 8 May 2018.
4.	Council Office Requirements	Planning underway to relieve high occupancy dense areas. Some teams will be relocated to external office accommodation.
5.	Land Development and Sales	Various sales and projects are underway and workshops/reports will be prepared to present to Council as required.



Northern Roof of the Courthouse

4. Recreation Manager's Update

4.1. Customer Service

The CRM measurement tool is not reporting correctly. The Council are working with Information Services (IS) to resolve this so more accurate information can be provided to future meetings.

4.2. Operations

General

Jane Matchett has returned to work after three months leave. Unfortunately the position of Parks Officer for Oamaru is currently vacant, so capacity is still an issue for the team.

Mowing of reserves in the Waitaki district has been significantly disrupted by recent heavy and frequent rainfall and warm ground temperatures. In February there was 238mm of rain compared to an historic average of 15mm. In March (to 27 March 2018), there was 101mm compared with the historic average of 29mm. These are not normal autumnal conditions. Ground temperatures are expected to drop in the coming month

which should help slow the growth of grass. These extraordinary rain events have had a number of impacts on Council's mowing contractor:

- They may not be able to mow at all when it is wet (for example, a week of mowing was lost with Cyclone Gita).
- They may not be able to achieve a good cut when the grass is wet.
- Some reserve areas remain saturated, and may continue to be too wet to mow (heavy machinery ruts and damages the ground).
- The rain, combined with warm ground temperatures, is creating rapid growth.
- Currently, Council's contractor is taking on additional temporary staff, and working longer hours and weekends in order to do as much mowing as they can as weather conditions permit.

Motor Home Friendly status will be conferred on Oamaru by the New Zealand Motor Caravan Association in April.

Aquatics

Narcis Gherca won Coach of The Year at the 2018 Sport Waitaki Sports Awards for the third time.

Once again the Council have been successful in acquired funding from Sport Otago to continue the Swim for Life programme with Schools throughout North Otago.

Local swimmers performed well at National Division II swim champs in Rotorua with a haul of medals and 43 personal bests out of 48 races – a number of swimmers achieved qualification for the National Age Groups champs later in April at this meet.

Lakes Camping Grounds

Good weather and corresponding numbers have resulted in revenue being above forecast. Further information will be made available once the final revenue has been confirmed by the finance team.

The Camp Management contract is currently out for tender.

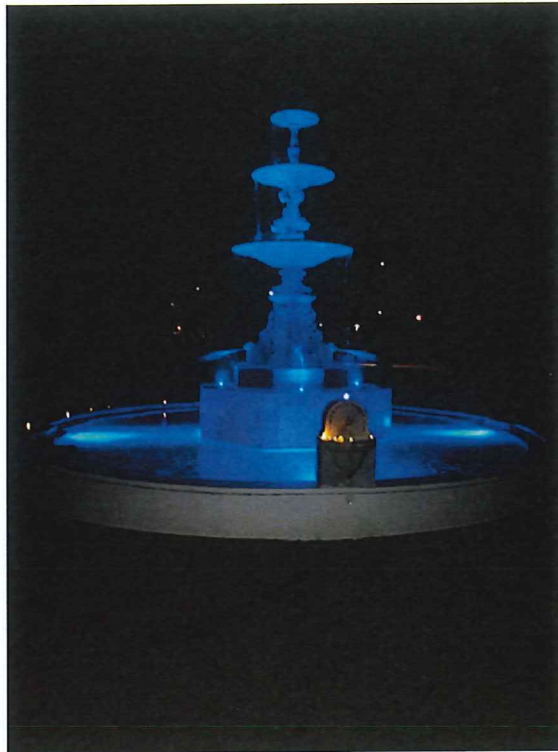
Parks

A replacement sign frame has been installed at the Moeraki lookout and looks great. Officers would like to see the signs updated in coming years, subject to budgets and priorities. These signs were originally installed by the Otago Regional Council as part of a Millenium project.



Moeraki Lookout Sign

An unveiling of the Craig Fountain lighting was held in conjunction with Rotary who fundraised for these. The occasion had a good number of attendees, and favourable comments were received.



Craig Fountain at the lighting unveiling

Refurbishment of the Oamaru lookout direction sign has been completed. The sign now includes reference to other UNESCO built heritage sites and reference to Doctor Who's home planet 'Gallifrey' in a nod to our 'Steampunk' culture.



Lookout Point Sign

Construction of the BMX track by the BMX club is underway. Council has supplied the clay for this and will be constructing a carpark once final capping of the landfill has been completed. It is no longer suggested that the carpark location be adjacent to the track with access along the existing road/track from Selwyn Street even though that was once considered due to budget constraints.

A community group has constructed a dog exercise/agility area on the cape. The Council have developed a MoU with them and the Mountain Biking club has been informed of plans and do not have concerns.

Maheno School has approached Council requesting permission to place a replica memorial to that installed on Fraser Island at the Maheno Cenotaph. Officers are supportive and are working with the School on this.



Maheno Memorial on Fraser Island

Sports

A car body was found by contractors while excavating the foundations for the new North Otago cricket pavilion at Centennial Park. The car body has been removed and cricket are getting soil tests done to determine if there is any other contamination.

Toilets

The cleaning contract for the Omarama toilets is currently out for tender.

Construction of the new toilet facility at Dunback has been completed and is in use. The Council have received comments from members of the Dunback community of how flash they are.



Dunback toilet

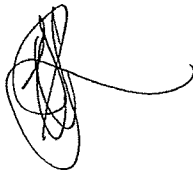
Alps to Ocean

A hearing on Council's resource consent application for the section from Sailors Cutting to Benmore Dam was held on 21 March 2018. The Commissioner's decision is expected to be received in coming weeks.

4.3. Projects

Larger Projects (Prioritised)		
2.	Palmerston Walking Improvements.	Officers are still trying to make contact with the neighbouring landowner for the district road to State Highway 1 connection to discuss options prior to taking a report to the Community Board.
3.	Ahuriri and Waihemo Bike Parks	Community Boards have approved concept and officers are working with the communities to finalise the design and funding opportunities.
4.	Mill Domain	Youth cricket commenced using Mill Domain in March. Further renovation work of vibramoling and fertilising is planned for April.
5.	Streetscapes	Contractors have been approached for quotes for the plant elements of Dunback and Hampden streetscapes. The construction elements of Hampden will be subject to NZTA approval and available budget.
6.	Dunback Domain Toilets	The new toilets are on site and available for use. Comments thus far have been favourable, including some like 'we (the community) do not deserve such nice toilets'. Some minor finishing work (eg planting of tussocks on the discharge fields) is to be completed in the coming months.

7.	Duntroon Toilets	Land Information New Zealand (LINZ) has acknowledged Council's request to purchase the land under the Public Works Act. The Council is waiting for LINZ to run the necessary process.
8.	Weston Domain Toilets	Design and specifications have been finalised and building consent will be applied for before the end of April.
9.	Sailors Cutting and Falstone waste water systems	Construction drawing have been drafted for Sailors Cutting and this is expected to be tendered in April/ May. The design for Falstone is being reviewed to determine if there is an option that would work without the requirement for diesel pumps.
10.	Weston Domain Water Supply	No progress.
11.	King George Park drainage	Existing drains have been investigated and survey work is currently being completed to develop contract specifications for a perimeter drain to cut off surface water flow from the hillside above.



Neil Jorgensen
Assets Group Manager

Attachments:

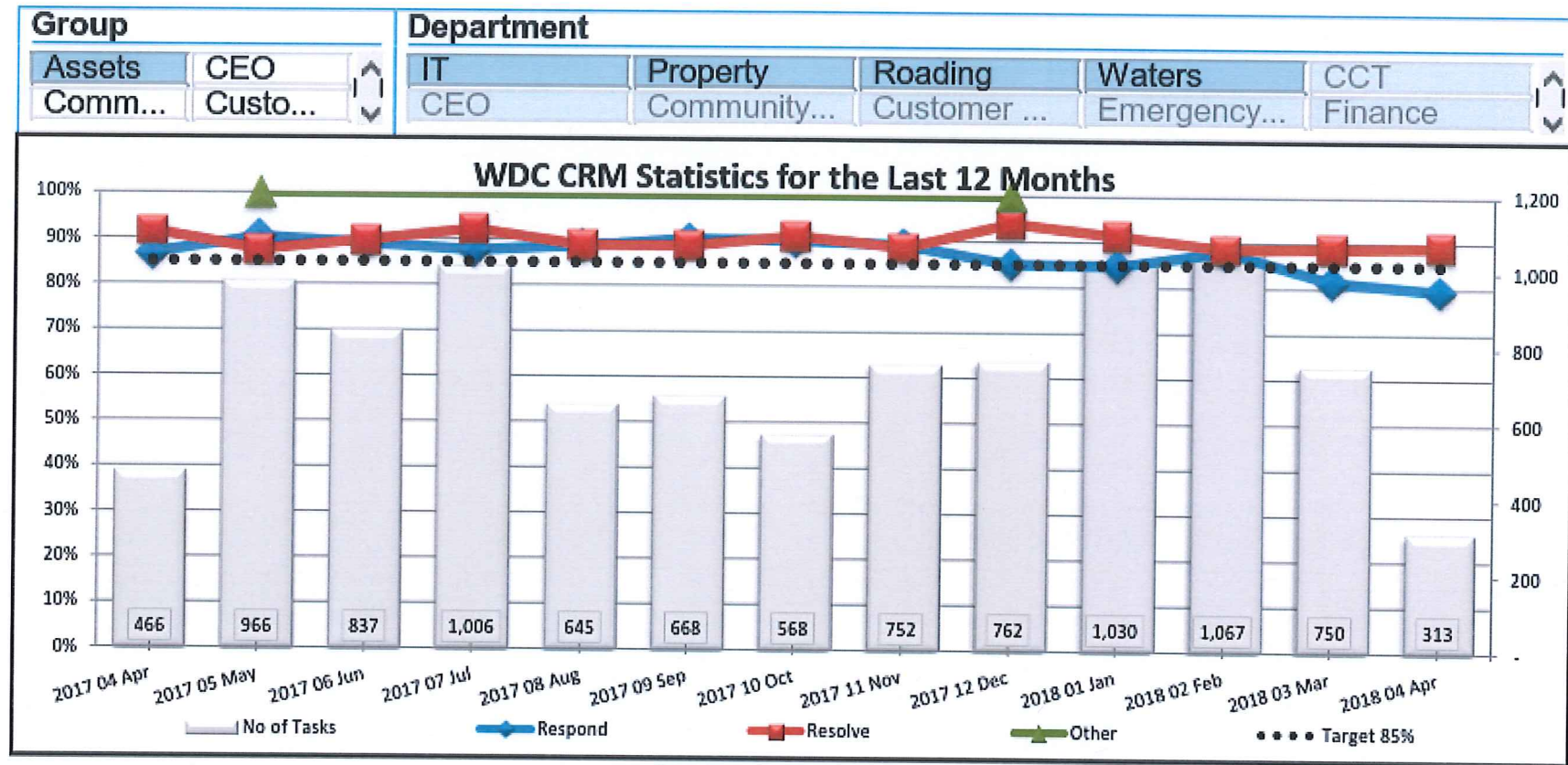
Tenders Recently Let
CRM Report
SouthRoads Summary Report for March

Tenders recently let

This table shows tender let over the last few months and will be kept as a six monthly rolling schedule.

Contract No.	Name of Contract	Date Contract Let	Tenders received	Awarded to	Tender value (ex GST)	Range of tenders received	Engineers Estimate	Start Date	Date of Completion
672	Ardgowan Road – Seal widening	15/12/2017	2	SouthRoads Ltd	\$297,249.20	\$297,249.20 to \$499,310.97	\$250,000	10/01/2018	06/03/2018
660	Pavement Rehabilitations	01/12/2017	2	The Roding Company	\$938,000.00	\$916,651.94 to \$938,000.00	\$830,000	22/01/2018	23/04/2018
658	Footpath resurfacing 2017/2018	04/10/2017	2	Whitestone Contracting Ltd	\$319,001.49	\$319,001.49 to \$501,852.20	\$378,000	04/10/2017	30/06/2018
666	State Highway LED Upgrade	15/07/2017	2	Orange Tek International	\$266,857.00	Closed contest	\$300,000	19/06/2017	01/07/2018
667	Led Streetlights retrofit Supply for 2017/2019	28/09/2017	7	Techlight Ltd and Orange Tek	\$675,800.00	Open tender	\$800,000	28/09/2017	30/06/2019
668	Kakanui Point Component Renewals 2017/2018		Direct Appointment	Recreation Construction are currently Council's preferred contractor for bridge maintenance	\$183,100.00	Direct Appointment	N/A	07/08/2017	31/12/2017

CRM Reports



WDC 642 Summary Report March 2018

Welcome to the March report, this month we have had some unsettled weather with a mix of both warmer and cooler days.

The footpath crews have been working on footpath repairs in Weston and tidying up some areas around Oamaru. They are now heading back to Waihemo to tidy up some outstanding work

The drainage crews have been completing drainage renewals on Ardgowan Road and have shifted into the Ngapara/Fiveforks area to complete dig-out repairs and side drainage.

The Maintenance Metalling programme is underway, and they have been focusing on the very rural road project working out of Robbs Crossing and Maerewhenue. Extraction has started at our Blacks Road site in Palmerston which is turning out really well. We will aim to get some of this metal on the roads in April.

The premix crew has been completing edge break and levelling work throughout the district. Focussing on our busy roads prior to the Easter rush.

Our graders have been busy working on their monthly beats. The North grader has made been working in the Corriedale ward tidying up some flood damage as well as their maintenance work. The South grader has been completing some very rural roads drainage works along with flood damage throughout the district to get things tidied from Cyclone Gita.

Delta have been focusing on noxious spraying and township spraying. They have been identifying some Lichen areas to spray in April and some trimming of vegetation to fit within the road envelope over the winter

The signs programme has had another busy month with staff completing programmed work and renewing a lot of old signs.

The stabi crew has completed some repairs on Weston – Ngapara Road before shifting down to Moeraki to complete some outstanding repairs.

PERFORMANCE

EFFECTIVENESS	CRMs	Structures	Monthly	2
		Culverts/Side drains	Monthly	15
		Fallen Trees	Monthly	2
		Flooding Roads/Footpaths	Monthly	1
		Frost and Ice Response	Monthly	-
		Grading/Metalling	Monthly	46
		Kerb and Channel	Monthly	2
		Road Litter	Monthly	12
		Signs Missing/Damaged	Monthly	5
		Roadside Vegetation	Monthly	4
		Safety Road Condition	Monthly	5
		Sealed Road Failures	Monthly	5
		Potholes	Monthly	10
		Snow Clearing	Monthly	-

				Month	YTD
PEOPLE / CULTURE	TEAM SAFETY	Medical Treatment Intervention - #	Monthly	0	1
		Lost Time Injury - #	Monthly	0	0
		Near Miss/IOF	Monthly	17	132
		Incidents	Monthly	7	62
		Safety Audits/Tours completed	Monthly	6	42

PROGRESS

Item	Completed	Comments
Stabi's	997.90m ²	11,717.2m ² YTD
Maintenance Metaling (20,000m ³)	276.3 m ³	11,112.9m ³ YTD
Grading (280km target)	81.5km (MTD)	1,374km (YTD)
Road Sweeping	30 (MTD)	321 (YTD)
Signs	Cleaned 5 (MTD) Straightened 16 (MTD)	272 (YTD) 251 (YTD)
Roadside Litter Collection	9 (MTD)	176 (YTD)
Wilding Trees	7 (MTD)	150 (YTD)
Traffic Counts (300 per year)	(MTD)	262 (YTD) 87.3%

Inspection Table

Activity	Completed MTD	Completed YTD	Remaining Quantity
Culvert Inspections (240/month)	162	1,995	885 (30.7%)
Bridge Inspections (15/month)	6	45	135 (75%)

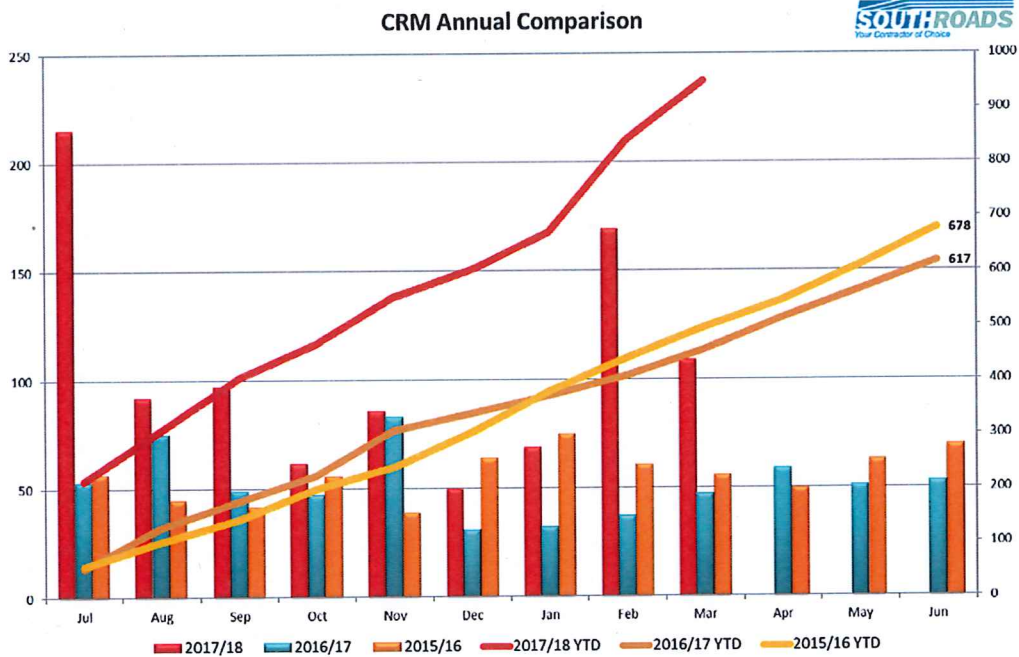
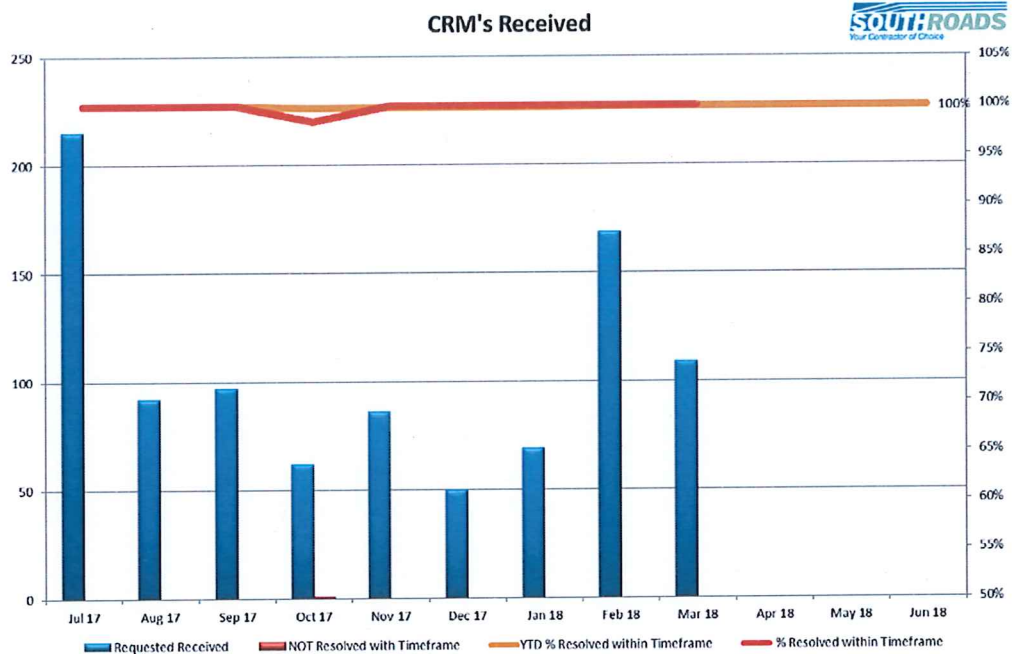
RISK & STRATEGY UPDATES

Identified Risks		Update	
Roads	Henburn Road	This road has had a fair beating with traffic and the different weather extremes over the last few months. It will need some maintenance over the next while to keep up with the increased traffic volumes.	
	Coal Pit Road	Saturated material should be programmed to be removed before winter.	
	Waianakarua Road	Coastal erosion work has been completed. This section of road will be monitored for any other movements.	
	Horse Range Road	Road narrowed to one lane. This has had the culvert pipe re-connected and rock replaced and will be monitored for any subsidence.	
Strategic	Slips	Haven Street - Moeraki	Continually moving. This will continue to be monitored.
	RAMM Data	Pocket RAMM devices are being used to capture data in the field and programme repairs while onsite.	
	Reseal sites	Reseal sites have been released for the 2018/19 season. These sites will then be inspected, and repairs programmed to get repairs underway before next season.	

CUSTOMER SERVICE MANAGER REPORT

We received 109 CRMs for the month of March. This is down 60 on last month, with last month spiking due to Cyclone Gita. There is still a lot of grading and spot metalling request to tidy up. The majority of these have resulted from the cyclone.

CRM REPORT



PERFORMANCE MEASURE RESULTS

For March the Management Performance Measures we have scored a 95% compliance. Focus will be put into improving traffic count data as there is still some small issues around some data being sent through.

The Operational Performance results are at 89% compliance. Focus will be put into grading and spot metaling of unsealed roads, vegetation control around town and in surface water channels and to target pothole repairs to bring this score up.

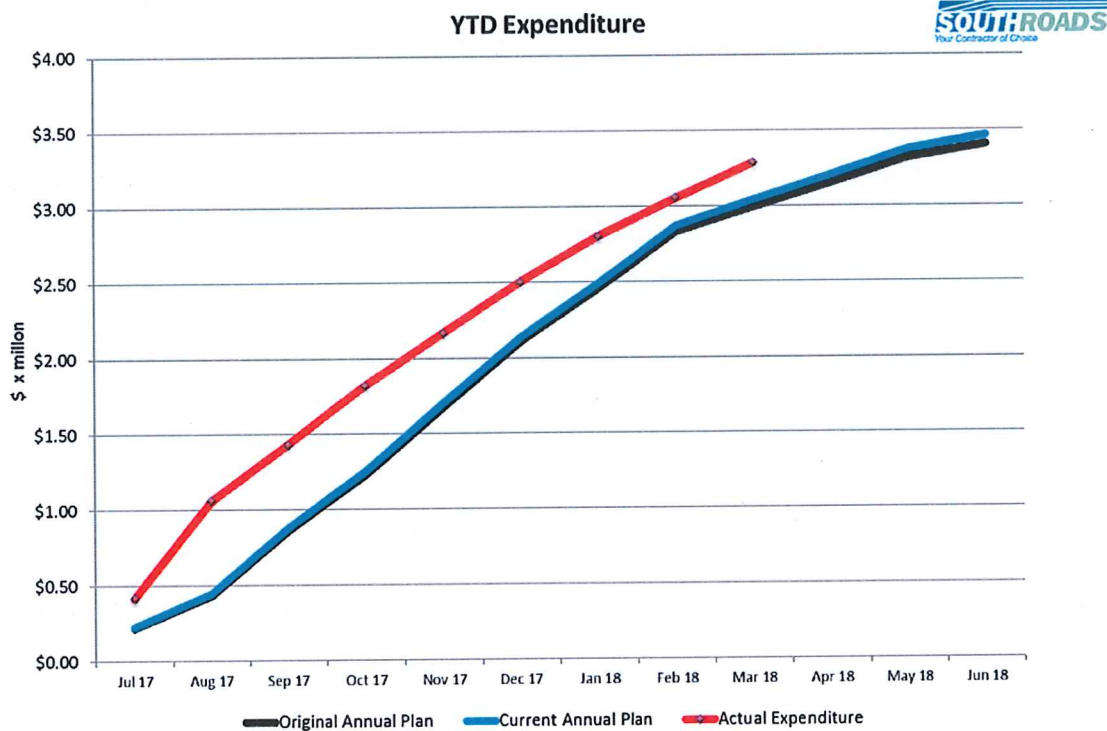
GOLD STAR INITIATIVES

We have implemented the Mobile Roads phone app to complete sump inspections, recording the location of these and providing photos of the asset.

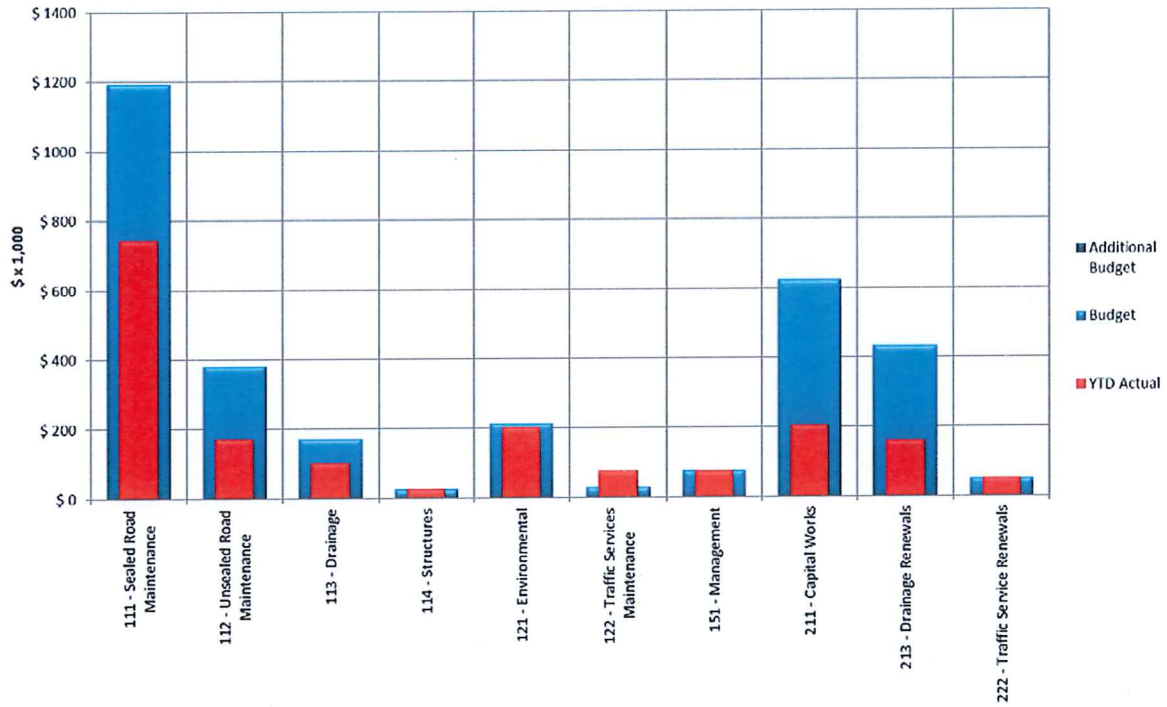
TRAFFIC CRASH/DAMANAGE REPORT

Airedale Road – Car rolled and was called out by the police. Slippery surface signs put up and dust spread over the oil/fuel spilt on the road

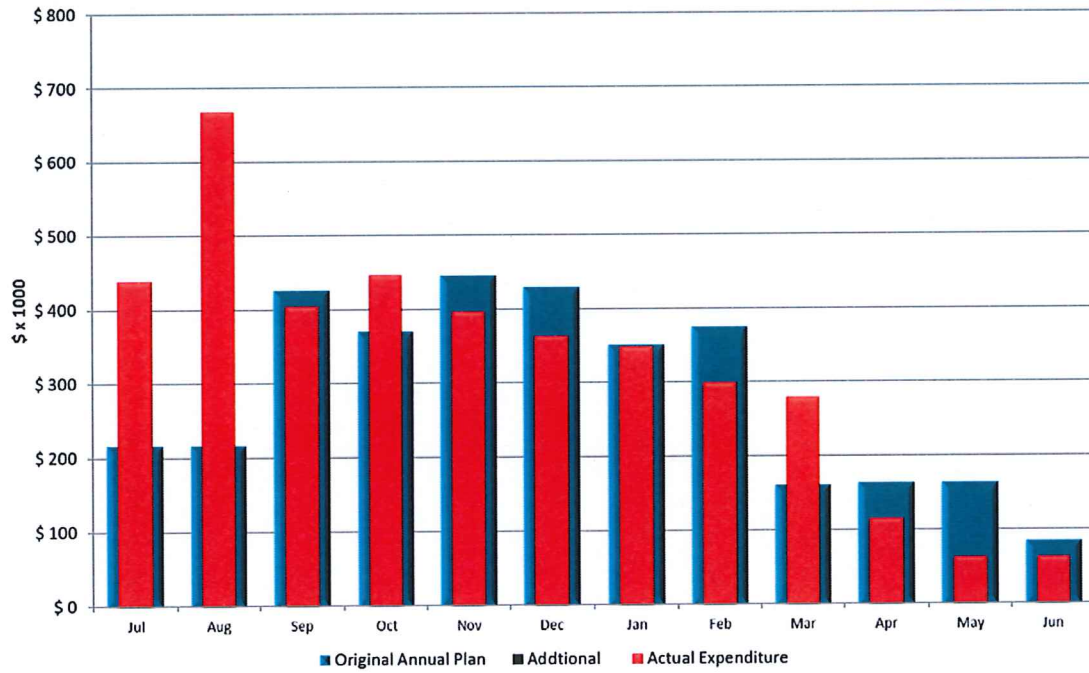
FINANCIAL GRAPHS



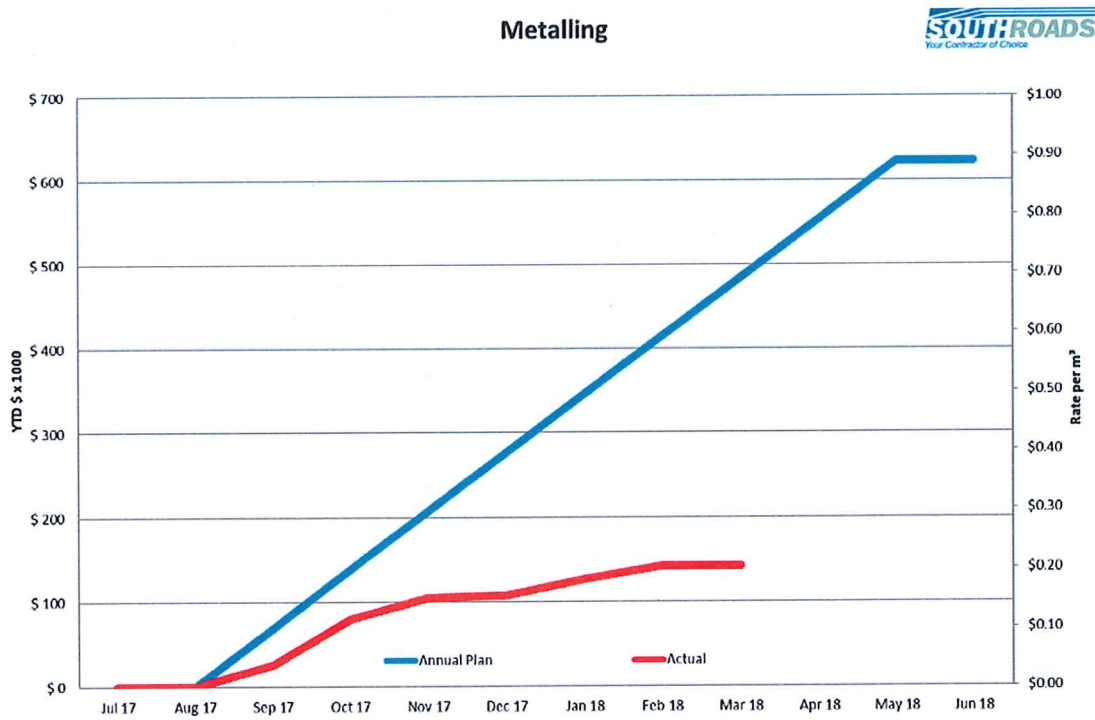
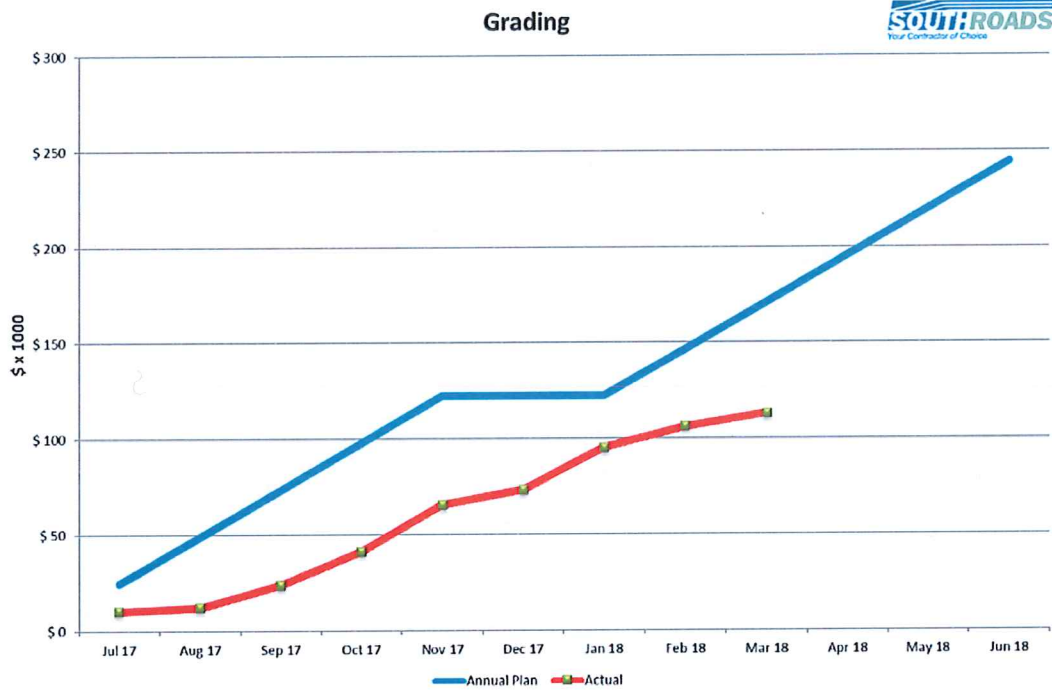
Expenditure by Category

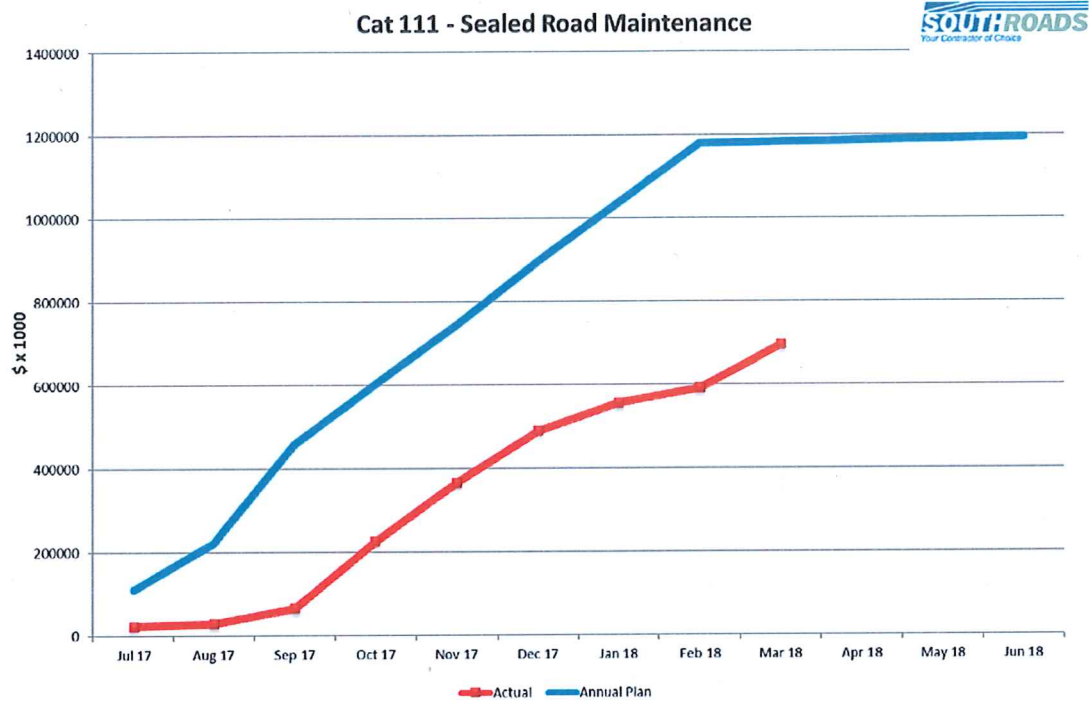


Monthly Expenditure



KEY PERFORMANCE INDICATOR GRAPHS





FINANCIAL SUMMARY

All Works Summary	Jul	Aug	Sep	Oct	Nov	Dec	Jan	Feb	Mar	Apr	May	Jun	Total	Under(-ve)/ Over (+ve)	%age Under(-ve)/ Over (+ve)
Original Annual Plan	239121	239121	495910	447225	525158	459480	380797	404407	190450	185433	185433	106737	3859273		
Additional	0	0	0	0	0	0	0	0	0	0	0	0	0		
Current Annual Plan	243926	243926	500715	452030	529964	464286	385603	409213	195255	190238	190238	111542	3916936		
YTD Revised Annual Plan	243926	243926	500715	452030	529964	464286	385603	409213	195255	0	0	0	3424917		
Actual Expenditure	441186	668124	404827	447086	397688	363852	349034	300277	302528	116323	63749	63749	3918425	1489	0%
Remaining Cyclic	0	0	0	0	0	0	0	0	0	0	0	0	0		
Tasked Forward Work	0	0	0	0	0	0	0	0	0	496576	630505	516797	1643878		
Projected Expenditure	441186	668124	404827	447086	397688	363852	349034	300277	302528	612899	694255	580546	5562303	1645367	42%

FINANCIAL COMMENTARY

The year completed expenditure is \$3,674,603.00. The claim for the month was \$302,528.00 (including township works) and consisted of mainly programmed works and maintenance activities.