

# INTERIM WAIHEMO COMMUNITY BOARD 10 YEAR PLAN

1 JULY 2021 - 30 JUNE 2031





**1 JULY 2021 - 30 JUNE 2031**

## **INTRODUCTION**

The purpose of this community board plan is to provide a vision for the Waihemo Community Board over the next ten years. It will help guide Community Board decisions, action and future engagement with the community and Council.

The timeframe of 10 years, 1 July 2021 to 30 June 2031, has been used to align with the Waitaki District Council's 2021-31 Long Term Plan. The intention is for this plan to be updated at least every 3 years following Waitaki District Council's adoption of its Long Term Plan.

This is an interim community board plan, which will be updated after the local body elections are held in October 2022.

## **BACKGROUND**

The 2018-2028 Waihemo Community Board 10 Year Plan was the result of Community workshops that were held in Palmerston, Moeraki and Dunback in February 2018. Approximately 60 people attended the workshops which were run by an external facilitator. The purpose of those workshops was to give the community the chance to tell us their needs and aspirations.

Community drop-in sessions were also held at Moeraki, Palmerston and Hampden during March 2019 as part of the Waitaki District Plan Review. Feedback from these sessions were also used to develop this Community Board Plan.

Those findings have now been used to update the 2021-2031 Waihemo Community Board 10 Year Plan to align with the 2021-2031 Long Term Plan.



# BOARD PROFILES



**HEATHER MCGREGOR**  
Chairperson

Phone (Home): 03 465 1255  
Phone (Mobile): 027 343 8731  
Email: [hmcgregor@waitaki.govt.nz](mailto:hmcgregor@waitaki.govt.nz)  
Post: 18 Runbrake Street, Palmerston



**PAUL ROY**  
Deputy Chairperson

Phone (Home): 03 465 5144  
Phone (Mobile): 027 201 9863  
Email: [proy@waitaki.govt.nz](mailto:proy@waitaki.govt.nz)  
Post: 173 Taieri Ridge Road, Moonlight, RD3, Palmerston



**KATRINA DODD**

Phone (Home): 03 465 0077  
Phone (Mobile): 027 430 8269  
Email: [kdodd@waitaki.govt.nz](mailto:kdodd@waitaki.govt.nz)  
Postal: 1274 Dunback-Morrisons Road, RD3, Palmerston



**CASEY LINKLATER**

Phone (Mobile): 021 044 2698  
Email: [clinklater@waitaki.govt.nz](mailto:clinklater@waitaki.govt.nz)  
Postal: 16 Burranness Street, Palmerston



**CAROL WATSON**

Phone (Home): 03 465 1489  
Phone (Mobile): 027 602 7048  
Email: [carol.watson@waitaki.govt.nz](mailto:carol.watson@waitaki.govt.nz)  
Postal: 12 Goodwood Road, RD 1, Goodwood, Palmerston



**COUNCILLOR JIM THOMSON**  
Council Representative

Phone (Mobile): 027 465 2007  
Email: [jthomson@waitaki.govt.nz](mailto:jthomson@waitaki.govt.nz)  
Postal: 218 Palmerston-Dunback Rd, RD3, Palmerston

# ROLE OF COMMUNITY BOARD

The role of the Community Board includes:

- Representing and acting as an advocate for the interests of its community
- Considering and reporting on matters referred to it by the Council, or of any matter of interest or concern to the Community Board
- Maintaining an overview of services provided by the Council within the community
- Preparing an annual submission to the Council for expenditure within the community
- Communicating with community organisations and special interest groups
- Undertaking any other responsibilities that are delegated to it by the council

Elected at the same time as Council, the Community Board consists of six members (including one councillor). Voters living in the Waihemo Ward are able to vote for their Community Board members.

# WAITAKI DISTRICT COUNCIL VISION

The projects identified in our community plan contribute to the District's vision to make "Waitaki THE BEST PLACE TO BE!". They support the districts community outcomes of:

- Prosperous District
- Strong Communities
- Quality Services
- Valued Environment



# WAIHEMO COMMUNITY BOARD KEY FOCUS AREAS

Area of focus	What do we want to achieve?	What will the Board do?	Timeframe
<b>Recreational facilities</b>	Improving and developing recreational facilities	<p>A new bikepark and skatepark has been developed in Palmerston since 2018 with Board support. A submission was lodged to the 2021-2031 Long Term Plan for fencing around these facilities to improve the safety for users.</p> <p>The Board will lodge a submission to the Annual Plan for bike stands to be located in town and at the bike park.</p> <p>The Board lodged a submission to the 2021-2031 Long Term Plan for the development of walking tracks (Puketapu and Dunback), and for the development of bike tracks to link Palmerston to Oamaru.</p>	<p>2021-2031 Long Term Plan submission was lodged. To follow up in Annual Plan 2022.</p> <p>Submission to be lodged for the 2022-2023 Annual Plan.</p> <p>Funding was not approved in the LTP due to a commitment to complete the A2O before other track development is committed.</p>
<b>Museum future development/ use of the museum</b>	Valuing environment and heritage	Continue existing funding.	On-going
<b>Maintain walking tracks (Millers Bay and Millennium track) – Moeraki</b>	Improving and developing recreational facilities	Work with Councils Recreation team on the plan for amenity maintenance and improvement for Millers Bay and the Millennium track	Reviewed annually
<b>Develop walking and biking tracks (Palmerston)</b> <ul style="list-style-type: none"> <li>Walking track up Puketapu</li> <li>Oamaru to Palmerston cycleway</li> <li>Hampden to Dunback walkway</li> <li>Walking track Mooner Street</li> </ul>	<p>Improving and developing recreational facilities</p> <p>Puketapu Community Trust feasibility study Yr 4 2021-2031 LTP.</p> <p>Palmerston-Dunback revisit feasibility study.</p> <p>Develop Shag Point to Hampden and Moeraki.</p> <p>Dunback walkway to be added from camp to swing bridge.</p> <p>Extend to Brough Road.</p>	<ul style="list-style-type: none"> <li>Work with Council on the Coastal cycleway feasibility study to ensure community views are taken into consideration.</li> <li>Work with Council on walkway realignment options at Puketapu.</li> </ul>	<p>To be reviewed Yr 3 of LTP.</p> <p>To be reviewed Yr 3 of LTP.</p> <p>Progressing.</p> <p>Mooner St walkway completed. Extension to Brough Rd to be reviewed.</p>
<b>Heritage protection – Historic and geological heritage</b>	Protect and showcase environment	Work with Waitaki District Council to ensure that heritage and geological items worthy of protection are included in the Waitaki District Plan review for consideration.	The Draft Waitaki District Plan is scheduled to be released late 2021.
<b>Waterways – flooding issues (Hampden and Palmerston townships)</b>	Environmental and private property protection	Talk to ORC about developing a fact sheet outlining responsibilities for care of waterways to be provided to landowners with waterways running through their property	Request a workshop with Waitaki District Council staff to discuss the issues and options before the end of 2022.
<b>Waterways: – flooding avoidance</b>	Avoid flood damage	Advocate for riparian planting for Dunback Domain and highlight community concern regarding the effect on flooding of willows	Write to Otago Regional Council before

Area of focus	What do we want to achieve?	What will the Board do?	Timeframe
<b>(Dunback)</b>		along Shag River.	end of 2022.
<b>Waterways – native plantings at Waianakarua River mouth</b>	Weed growth is kept under control	Write to Waitaki District Council's Parks & Recreation manager requesting weed control at Waianakarua River mouth is added to the programme of work	Lodge a letter with Waitaki District Council before end of 2022.
<b>Adequate land available for both residential and business development in all Waihemo townships</b>	Stimulating growth and economic development	Work with Waitaki District Council to ensure that the Waitaki District Plan provides adequate and appropriately zoned land for development	The Draft Waitaki District Plan is scheduled to be released late 2021.
<b>Electric car charging station (Palmerston, Dunback-Macraes Flat)</b>	Improving infrastructure – Palmerston now has an EV charging station. Additional EV station sought for Dunback, Macraes Flat, and Moeraki.	Approach OtagoNet (electricity provider) to investigate the possibility of charging stations in the Waihemo District (specifically Dunback, Macraes Flat and Moeraki).	Write to OtagoNet before end of 2022.
<b>Road Safety, including:</b> <ul style="list-style-type: none"> <li>• Reviewing speed limits in Waihemo townships (especially Hampden, Palmerston, Moeraki and Dunback)</li> <li>• Street lights in Moeraki</li> <li>• Intersection improvements in Palmerston</li> <li>• Road signs in foreign languages</li> </ul>	Safer roads	A workshop was held with the Waihemo Community Board and New Zealand Transport Agency to discuss road safety issues in July 2019.	Lodge a letter with Waitaki District Council to request a workshop to update before end of 2022.
<b>Improve Roding, footpaths and drainage</b> <ul style="list-style-type: none"> <li>• Kerb and channel –</li> <li>• More and better maintained footpaths</li> </ul>	Improving infrastructure Request for footpaths on Copinsha, Brough, and Stromness Streets in Palmerston. Request for footpath on Lincoln Street, Hampden.	Advocate on behalf of the community to Waitaki District Council to ensure continued expenditure on existing and new infrastructure in Waihemo. Revisit request for footpath on Lincoln Street, Hampden with Waitaki District Council.	In Yr 2 of 2021-2031 Long Term Plan the footpaths will be installed in Palmerston.
<b>Seal Lighthouse Road</b>	Improving infrastructure	Advocate on behalf of community to have Lighthouse Road added to the Council's seal extension programme.	Raise in 2021 Annual Plan process.

Area of focus	What do we want to achieve?	What will the Board do?	Timeframe
Hampden – Stormwater & Sewerage system	Improving infrastructure	Write to Waitaki District Council's Water manager requesting a review of the Stormwater and Sewerage systems in Hampden	Council has brought forward scoping project to 2022 to start community conversations.
Oxidation ponds - Moeraki	Improving infrastructure	Write to Waitaki District Council's Water manager requesting that the Oxidation Ponds are assessed to determine their ability to cope with increasing housing demand	Follow up on status of project with Waitaki District Council Water Manager.
Targeted marketing of Waihemo Ward	Raise profile of Waihemo	<p>1. Lodge a submission to the Waitaki District Council's 2018-28 Long Term Plan requesting the development of a targeted marketing plan for the Waihemo area.</p> <p>2. Write to Tourism Waitaki and the Waitaki District Council economic development manager requesting a targeted marketing campaign of Waihemo including:</p> <ul style="list-style-type: none"> <li>• A renewal of entrance signs for the Waihemo townships</li> <li>• The promotion of walkways and cycleways</li> <li>• Developing natural and cultural heritage themes and</li> <li>• Signage associated with the Puketapu Reserve.</li> </ul>	<p>Lodge a submission to the 2024-2034 Long Term Plan.</p> <p>Approved \$20k per year for 5 years for signage update. To revisit in 2022.</p> <p>Approved as above.</p>
Improved internet access in Waihemo (Dunback-Macraes Flat)	Improving infrastructure	The main street of Hampden and Palmerston have free wifi through Council's free wifi service.	Review service in Dunback and Macraes Flat to assess if wifi is satisfactory before end of 2022. Chorus installing fibre in Palmerston. Available 2022.
Communication between Council, Community Board and Community	Improve the communication channels for two-way communication	<p>Maintain a Community Board Plan that will set out priority actions for the Waihemo Community Board based on the aspirations of the Waihemo Community.</p> <p>Request the Waitaki District Council to carry more information about the actions and decisions made by the Waihemo Community Board on the Waitaki District Council website (including a "have your say" page).</p>	<p>The 10 year plan will be updated at least every 3 years to align with the Waitaki District Council's Long Term Plan.</p> <p>These are now available on Council's website. A new facebook page has been developed for the Waihemo Community Board.</p>



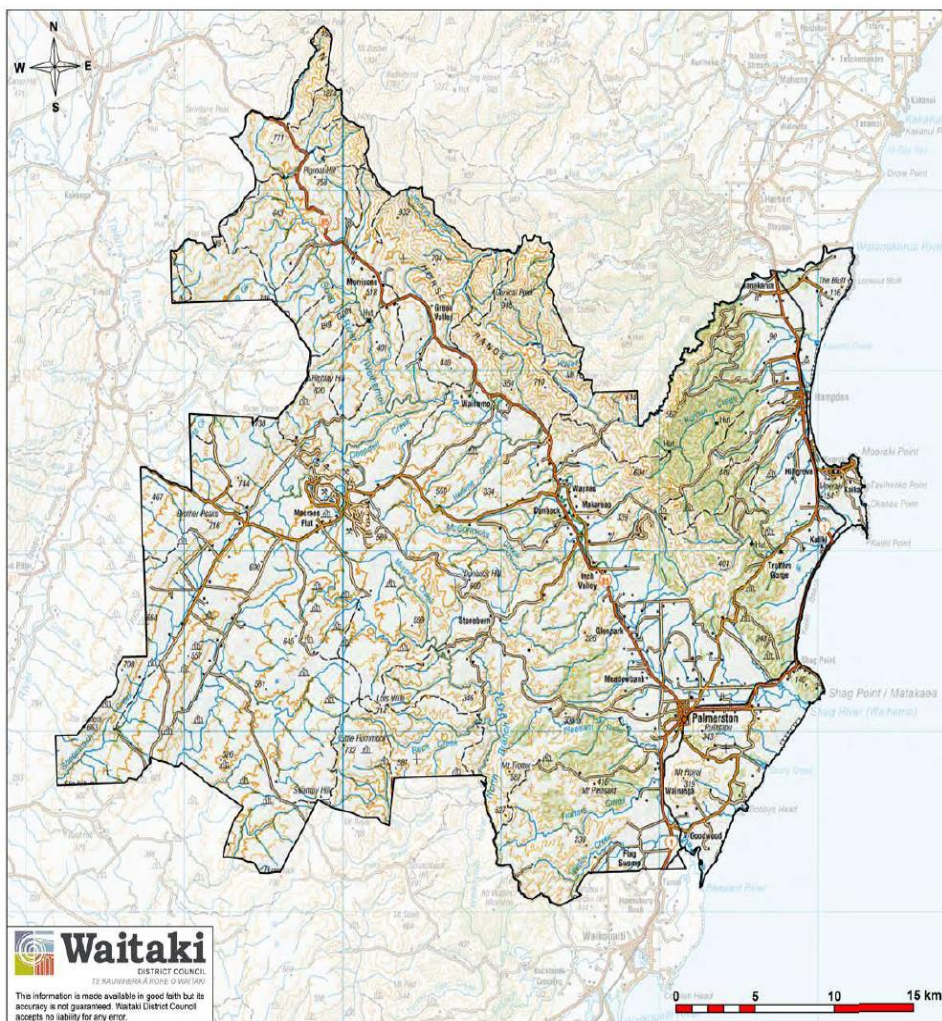
## Community profile

Waihemo ward has a population of 2,337 people.<sup>1</sup> In Waihemo 25% of the population is aged over 65 years which is higher than the national average (at 15%).

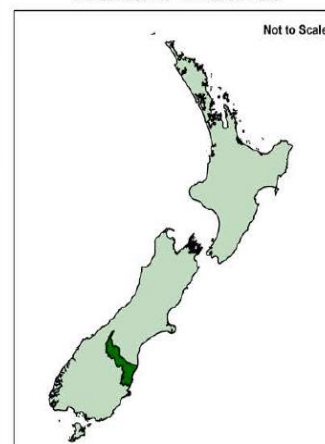


---

<sup>1</sup> Stats NZ Dataset: Subnational population estimates (TA, ward), by age and sex, at 30 June 2013-17 (2017 boundaries).



## Waihemo Ward Waitaki District



Waitaki District, New Zealand



Waihemo Ward, Waitaki District

# Appendix 1 – A summary of what the community told us during the community sessions held during 2018-2019

## ***Recreation and Environment***

- Protection of penguins and other wildlife– need agreed approach between stakeholders
- Rabbits are a problem
- Coastal erosion problems
- Maintenance of public land
- Millers Bay Reserve is messy - noxious weeds, abandoned-looking
- Millennium Track not kept in good condition - coastal erosion problem
- Trees need trimming on Tenby St and near Hall
- Theme of developing window on history – Maori, whaling, English village with seat of government, built environment
- Remove advertising signs north and south of Hampden that are no longer current
- Develop walkway/ cycleways (Moeraki-Hampden, Dunback-Macraes Flat)
- Walking and bike tracks – Waianakarua, Hampden-Katiki-Shag Point, Millennium track
- Cycle trail Moeraki to Beach Road
- Cycleway Palmerston to Dunback
- Walking tracks Dunback-Wadestown
- Improve town centre amenity (Palmerston)
- Private/ Council collaboration to tidy town centre
- Encourage shop owners to take pride in the look of their shops
- Sunflowers in centre gardens
- Community events Palmerston:
  - Men's shed to allow knowledge to be passed down to youth – partnership with Macraes
  - Sports coach for young and old
  - Senior computing
  - Community barn dance e.g. for Matariki
  - Develop community events and opportunities (Palmerston)
- Flooding damage - Need plan for riparian planting along the river through the Domain.
- Deal with environmental damage and improve amenity (Hampden):
- Millers Bay - road erosion, surface water
- Hampden beach – coastal erosion, car parking, playground improvement, fencing off
- Wilding pines management
- Develop recreation dam at Macraes post-mining
- Dunback Domain – add showers, fix tennis courts, add picnic tables, swing-bridge.
- Dog park (Dunback)

## ***Infrastructure***

### Palmerston:

- The clock needs to be fixed
- Vandalism of statues – who is responsible? The statues are on private land
- Derelict buildings need tidying up
- Waterwheel needs fixing
- Assets - Fantastic land-based business sector
- Need better parking and bike stands

### Moeraki-Hampden:

- Recognise Moeraki is a significant drawcard for visitors to district
- The sea is an asset

- Make sure Hampden school and library are retained
- Dunback Domain is a good asset, and the new signage is good.

#### Improve existing facilities (Palmerston)

- Tidy up of public grounds
- Development of Ross Park (e.g. cycle track; tree identification)
- Finish sports hall to allow for more use
- Develop skate park

#### Develop new facilities (Palmerston)

- Community gardens
- BBQ area
- Water supply – water metering for businesses (Moeraki-Hampden)
- Stormwater drainage
- Direction of stormwater disposal (Moeraki-Hampden)
- Improved internet access and cell phone coverage in the Waihemo Ward

### ***Infrastructure – roads/footpaths***

#### Palmerston - Improve road safety:

- Town centre intersection improvement – roundabout?
- Make speed limits 50 km/h throughout town –70 km/h limit on Dunback Rd is unsafe for children

#### Moeraki-Hampden - Improve road safety:

- Having three speed limits in Hampden is confusing
- Safety at Boulders turn-off and Moeraki turn-off
- Road safety between Hampden and Waianakarua
- Better parking for big trucks in Hampden

#### Palmerston – footpaths and drainage:

- Maintenance of culverts and creeks, and rubbish removal
  - Flooding is occurring from clogging of systems by gravel and rubbish
  - The creek is used as a dumping ground
- Not enough paths, or well-maintained paths
  - Loose gravel on paths is a hazard

#### Dunback – reduce the speed limit through Dunback

### ***Infrastructure - Waste Management***

- Palmerston - Green waste free to dump
- Hampden – Development in Hampden is restricted by a lack of a sewerage system

### ***Growth and Development***

- Encourage residential and business development (Palmerston)
- Retirement village
- Expedite residential subdivision and lifestyle blocks
- Make land available for housing
- Residential subdivision at Dunback
- Make land available for light industry
- Make it easy to start up business - assist new businesses to set up
- Planning for future growth (Dunback-Macraes-Flat):
- Encourage more families
- Promote Waynes and Dunback: - Signage at entrance and exit of towns
- Signage at Dunback about the church and Wellingtonia pine
- Dunback should be on Council maps



***Tourism development (Palmerston)***

- Palmerston junction town – encourage motorhomes to stop and stay (but no dump station)
- Proposal for motorhome park at A&P grounds
- Communities to work together for an overall tourist experience, not singularly – the cobweb effect

***Develop new visitor attractions in Moeraki***

- Fish shop at port
- Coffee house at lighthouse, with glass viewing area

***Other***

- Communication has become one-way – plenty of reports but nobody listens to local opinion.
- Nothing done about 10 year complaint about locked gates on road (Macraes).