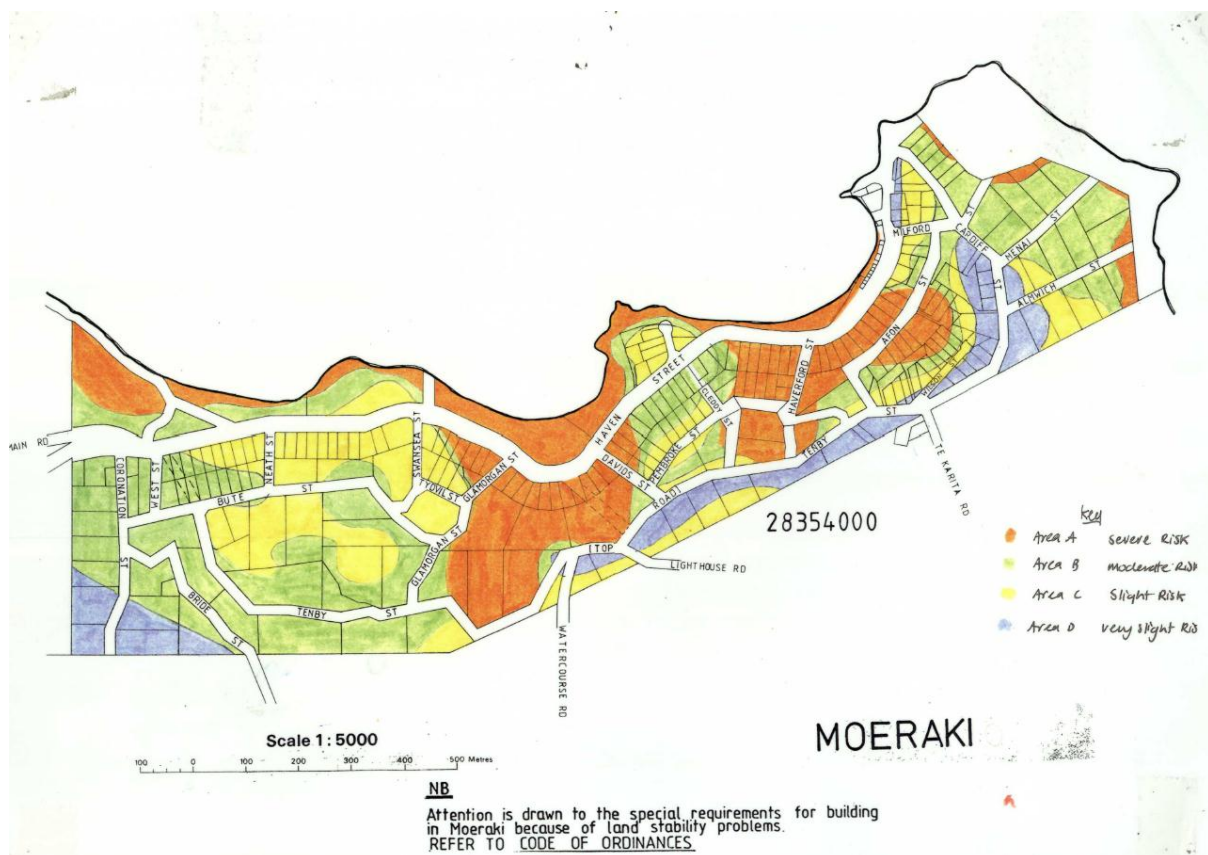


(For inclusion on Council's Moeraki Land Stability webpage)

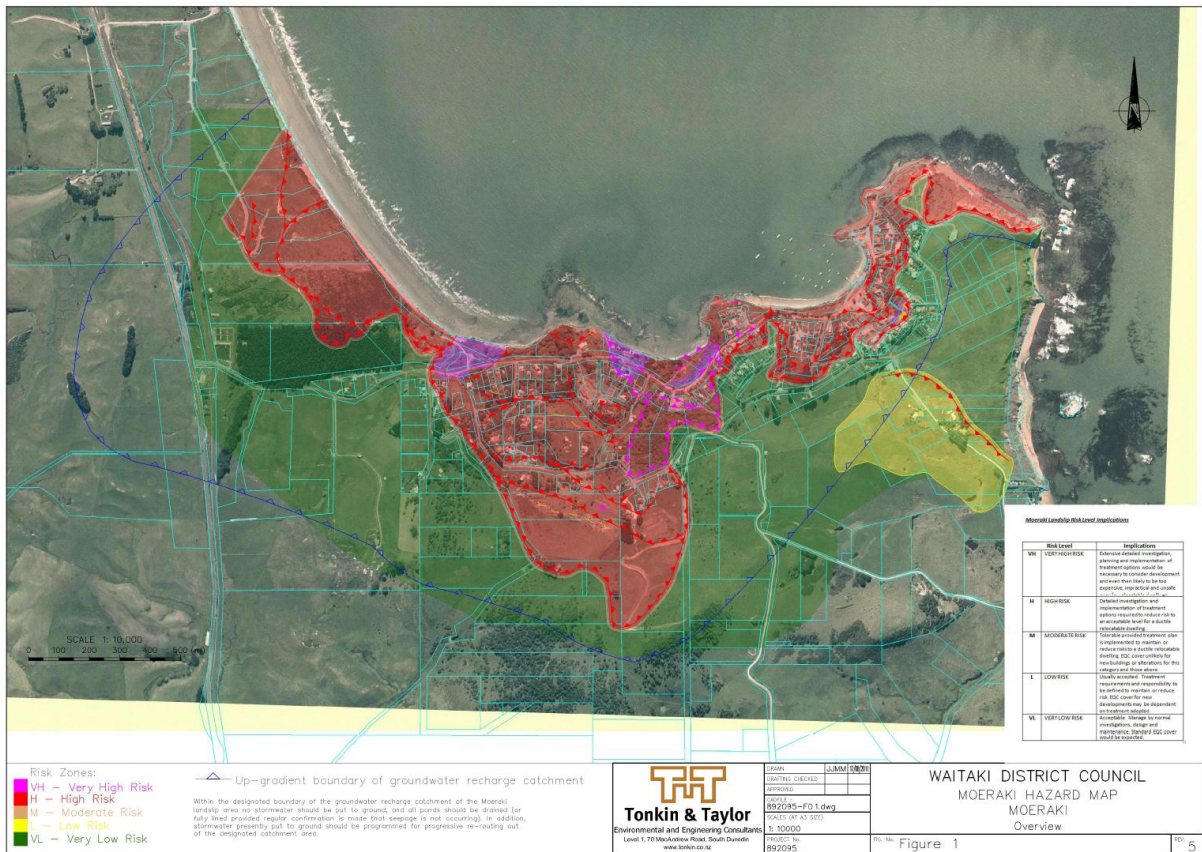
Status of Tonkin and Taylor 2011 Draft Hazard Map Report.

Council engaged Tonkin and Taylor (T&T) to update an earlier version of the Moeraki Hazard Map. The updated version includes the latest information available. It is in an electronic format enabling it to be readily updated as information comes available.

The earlier version of the Moeraki Hazard Map has been in existence for 20 or more years. This was prepared by Tonkin and Taylor (T&T). This map has seen widespread use in delivering Waitaki District Council (WDC) services including Land Information Memorandums (LIMs). See below.



The September 2011 Draft Hazard Map Report from T&T included the following Draft Hazard map.



The status of the Moeraki Hazard Map is draft. WDC is reviewing the 2011 draft and expects to have it finalised in March 2012.

The earlier version and the 2011 draft hazard map should be considered in any property related matters. WDC recommend appropriate advice is sought in relation to any property related matters.

Although the hazard map in draft, Waitaki District Council believes the information is sufficiently significant that it needs to be in the public domain.